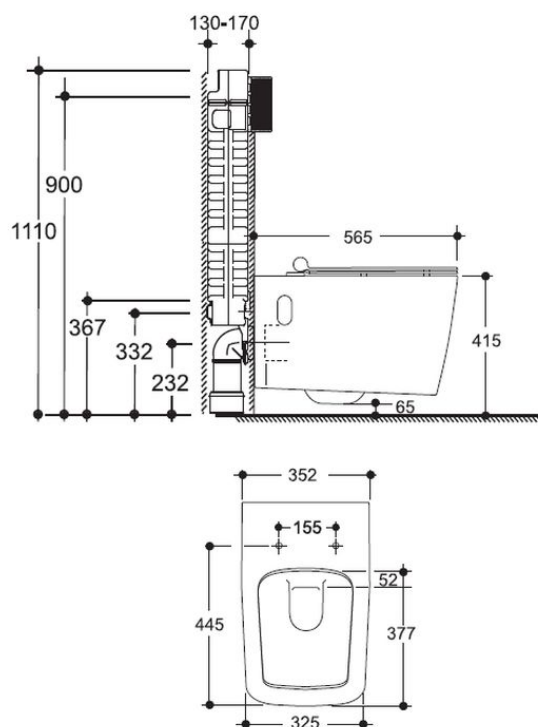


Vaal Refine Toilet Pan Wall Hung



Range:	Refine
Description:	Back inlet closed rim pan and thermoset soft close seat. Compatible with concealed cistern, duct cistern or concealed flush valve. Designed to flush effectively on 6/3L
Product Code:	439900WH
ERP Code:	CREFWHNN-2CO0377
Barcode:	6005826065434
Product Features:	Cobra TeamAssist, Cobra Genuine, Government, 10 Year Warranty, Projects
Dimensions:	(l) 590mm x (w) 430mm x (h) 420mm
Package Weight:	35.16
CAD3D:	Download

Product Images



MOT



Government



Cobra TeamAssist



Cobra Genuine



Projects



10 Year Warranty