

Grohe Essentials Holder



Range: Essentials

Description: The GROHE Essentials Holder in Brushed Hard Graphite – where style meets functionality! - material: metal, for crystal glass (40 372 001), soap dish (40 368 001) or soap dispenser (40 394 001), concealed fastening, GROHE Long-Life finish, suitable for screwing (including screws and dowels) or gluing (glue 40 915 000 sold separately), holding force: max. 5 kg, the specified holding capacity is valid for static (slowly applied) load and intended use only

Product Code: G-40369AL1

ERP Code: G-40369AL1

Barcode: 4005176429729

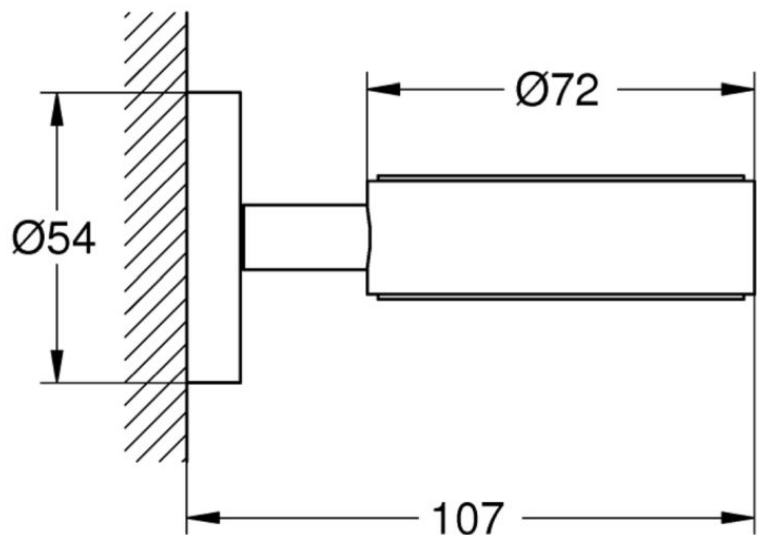
Product Features: 5 Year Warranty, GROHE Long-Life finish

Dimensions: (l) 110mm x (w) 90mm x (h) 70mm

Package Weight: 0.35

CAD3D: [Download](#)

Product Images



MOT



5 Year Warranty



GROHE Long-Life
finish