

## Grohe Rapid SL Element for WC, 1.13 m installation height

Range: Rapid SL

**Description:** with flushing cistern GD 2, 6 - 9 l for free-standing installation, for on-the-wall installations or studded walls powder coated steel frame, self-supporting for dry-cladding, completely pre-assembled with fixed connections lockable fixing material 2 WC fixing bolts fixing device for ceramic WC ceramics with small bearing area (less than 205 mm) require additional accessory 38 779 000 distance of fixing bolts 180/230 mm outlet bend Ø 90 mm depth adjustable reducer Ø 90/110 mm inlet and outlet connecting set flushing cistern GD 2, 6 - 9 l, containing following features: adjustment ex factory 6 l and 3 l pneumatic discharge valve offering 3 modes of operation: dual flush or start/stop or single flush water supply from left/right or back low noise (group I acc. to German Noise Specification) insulated against condensation 1/2" water supply connection including integrated angle valve and push fit flexible hose union no tools required for the installation of the inspection shaft including protection during construction phase for vertical or horizontal use for on-the-wall installation please order wall brackets 38 558 00M (sold separately) for mounting of small flush plates please order revision shaft 40 911 000 (sold separately)



**Product Code:** G-38584001

**ERP Code:** G-38584001

Barcode: 4005176863714

Product	10 Year Warranty
---------	------------------

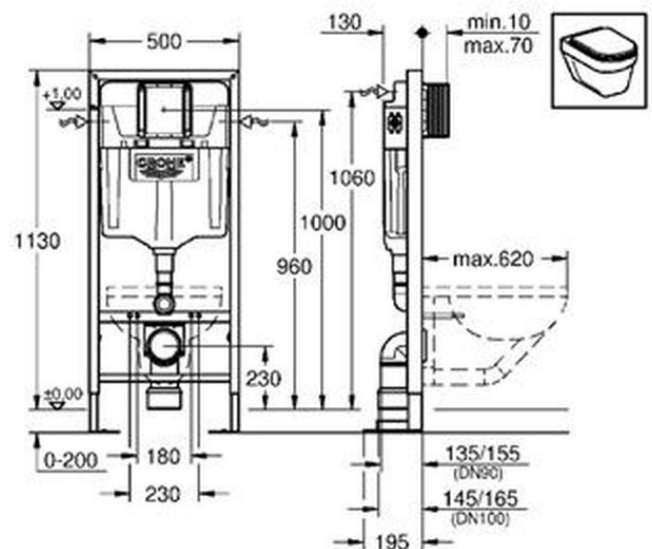
**Features:**

**Dimensions:** (l) 1171mm x (w) 527mm x (h) 219mm

**Package Weight:** 16.13

**CAD3D:** [Download](#)

## Product Images



MOT



## 10 Year Warranty