

Grohe Rondo Flush valve for WC



Range:	Rondo
Description:	concealed installation, ¾", stop valve, 6 - 14 l adjustable, for low pressure, for wash-down and wash-out bowls, flow pressure range from 0.6 - 3.0 bar , (min. static pressure 1.5 bar), with flow rate adjustment, box for concealed installation with , flush elbow, flush pipe adjustable in length, without wall plate/actuation, volume needed: 1.6 l/sec

Product Code: G-37157000

ERP Code: G-37157000

Barcode: 4005176142932

Product	2 Year Warranty
---------	-----------------

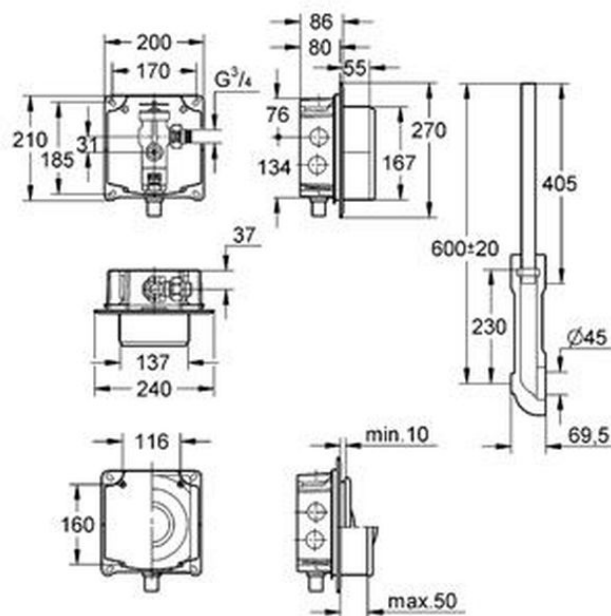
Features:

Dimensions: (l) 410mm x (w) 165mm x (h) 210mm

Package Weight: 2.6

CAD3D: [Download](#)

Product Images



MOT



2 Year Warranty