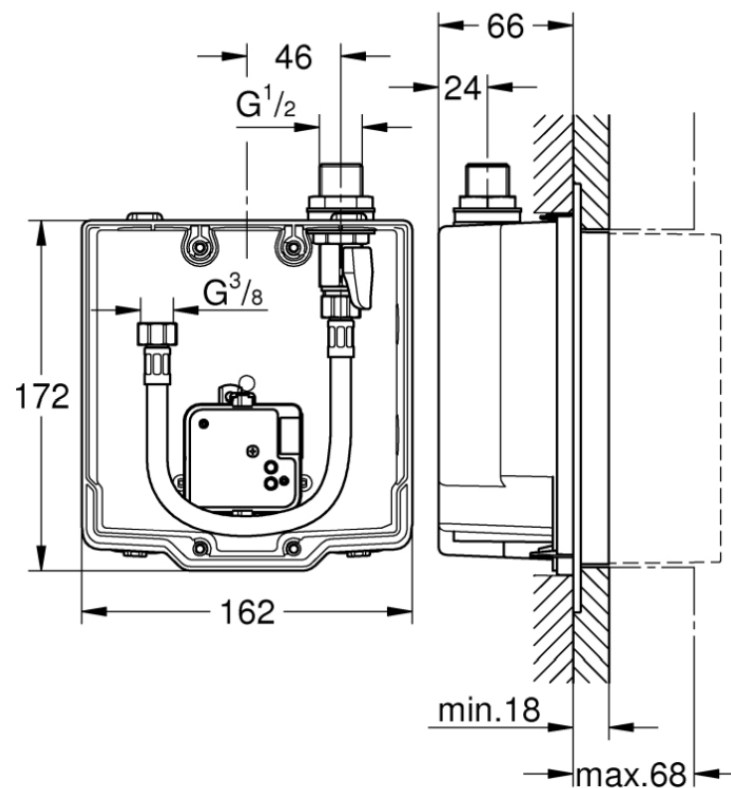


# Grohe Euroeco Cosmopolitan E Concealed mounting box



<b>Range:</b>	Euroeco Cosmopolitan E
<b>Description:</b>	wall installation for installation with pre-mixed or cold water suitable for IR-sets for final installation stop valve connection housing for power supply suitable for 36 410 000, 36 334 SD0, 36 335 SD0, 36 273 000 allows for waterproofing of wall construction surrounding the concealed body with sealing sleeve
<b>Product Code:</b>	G-36337001
<b>ERP Code:</b>	G-36337001
<b>Barcode:</b>	4005176595417
<b>Product Features:</b>	5 Year Warranty
<b>Dimensions:</b>	(l) 240mm x (w) 148mm x (h) 148mm
<b>Package Weight:</b>	0.85
<b>CAD3D:</b>	<a href="#">Download</a>

## Product Images



MOT



5 Year Warranty