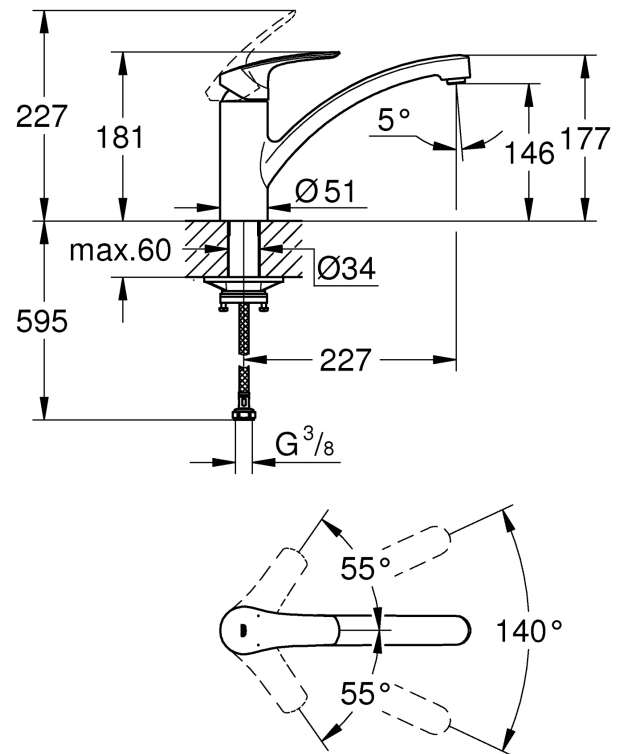


Grohe Eurosmart Single-lever sink mixer 1/2"

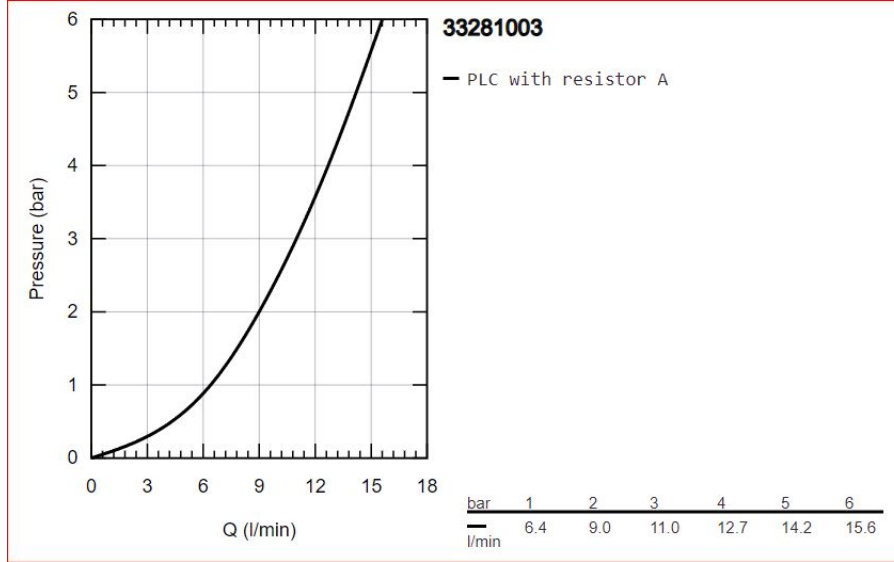


Range:	Eurosmart
Description:	The GROHE Eurosmart single-lever mixer – sleek good looks, fast fitting and a useful swivel spout - low spout, monobloc installation, GROHE Long-Life finish, GROHE SilkMove 35 mm ceramic cartridge, integrated temperature limiter, adjustable flow rate limiter, swivel cast spout, swivel area 140°, Lead and Nickel Free Inner Water Ways, mousseur with coin slot for tool free replacement, flexible connection hoses 3/8", metal fixation set, maximum flow rate (at 3 bar): 11 l/min, professional edition
Product Code:	G-33281003
ERP Code:	G-33281003
Barcode:	4005176635366
Product Features:	GROHE SilkMove, 20 Year Warranty, GROHE Long-Life finish
Dimensions:	(l) 305mm x (w) 290mm x (h) 60mm
Package Weight:	1.58
CAD3D:	Download

Product Images



Flow Chart



MOT



20 Year Warranty



GROHE SilkMove



GROHE Long-Life
finish