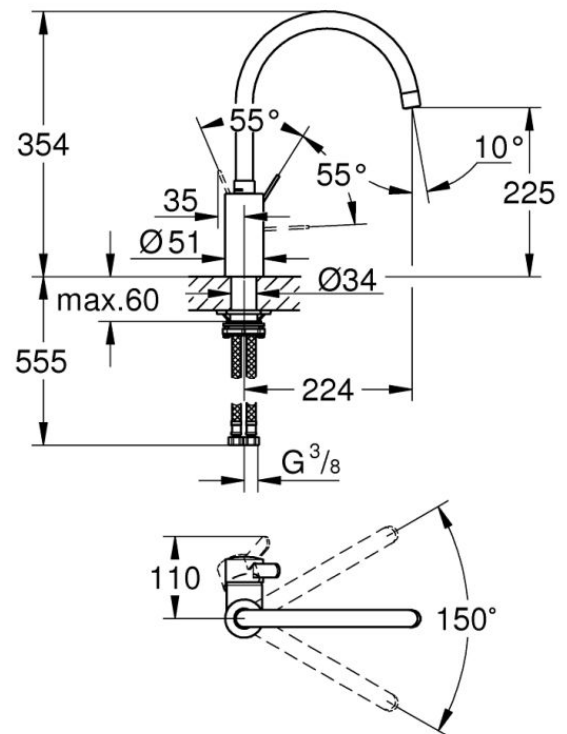


Grohe Eurosmart Cosmopolitan Single-lever sink mixer 1/2

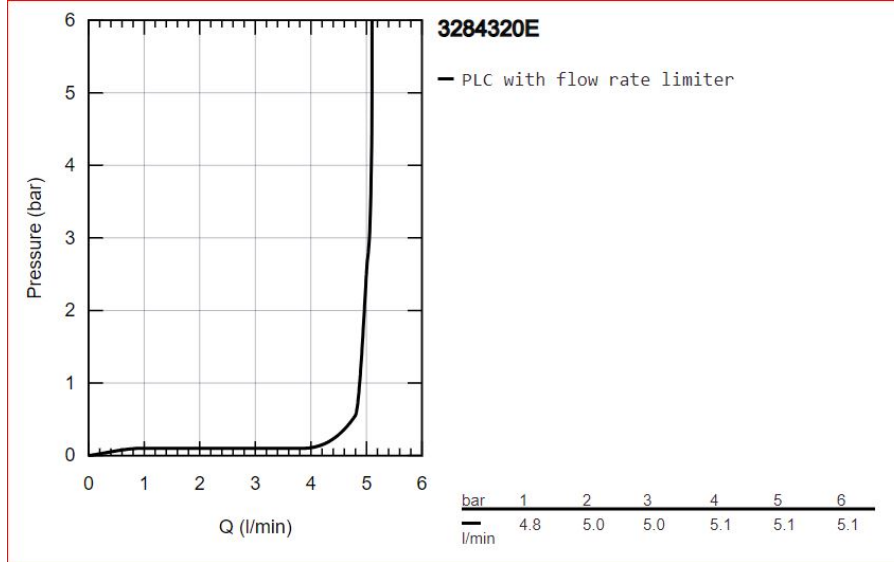


Range:	Eurosmart Cosmopolitan
Description:	The GROHE Eurosmart Cosmopolitan sink mixer – smart, convenient and filled with features, plus with water-saving technology - high spout, monobloc installation, GROHE Long-Life finish, GROHE SilkMove 35 mm ceramic cartridge, Lead and Nickel Free Inner Water Ways, GROHE Water Saving - Less water, perfect flow, mousseur, adjustable flow rate limiter, swivel tubular spout, swivel area 150°, flexible connection hoses, metal fixation set, maximum flow rate (at 3 bar): 5 l/min
Product Code:	G-3284320E
ERP Code:	G-3284320E
Barcode:	4005176466946
Product Features:	GROHE SilkMove, 20 Year Warranty, GROHE Long-Life finish, GROHE Water Saving
Dimensions:	(l) 475mm x (w) 310mm x (h) 85mm
Package Weight:	1.78
CAD3D:	Download

Product Images



Flow Chart



MOT



20 Year Warranty



GROHE SilkMove



GROHE Long-Life
finish



GROHE Water Saving