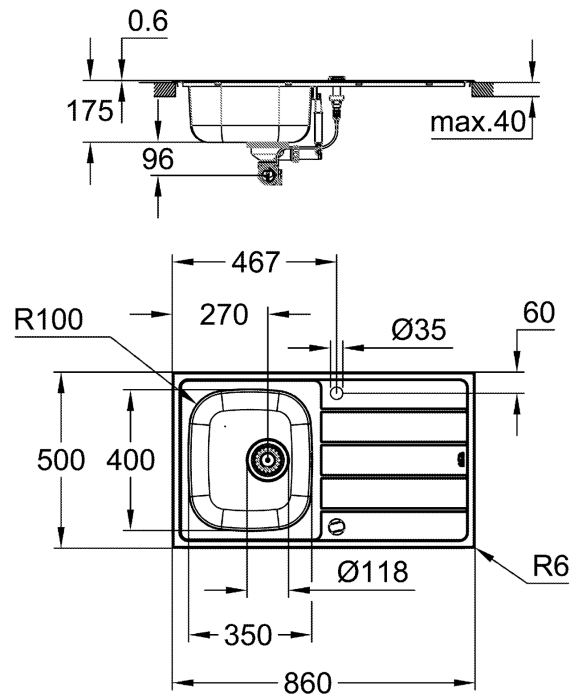


Grohe K200 Stainless steel sink with drainer



Range:	K200
Description:	Your sink sits at the heart of your kitchen, so make sure you pick a sink that is practical, durable and comfortable to use – the GROHE K200 stainless steel sink with drainer. The sink has two pre-drilled tap holes, meaning that it is fully reversible. The sink offers plenty of internal space, with a bowl depth of 16cm, meaning even large pans will fit comfortably. The sink comes with some clever features to enhance your experience: For a quieter kitchen, GROHE Whisper insulation on the underside of the sink dampens noise, and the automatic waste fitting with remote control means you can pull the plug without having to put your hand in the dirty water. The sink is made from GROHE StarLight AISI 304 grade stainless steel, meaning it is both durable and attractive with a sparkling finish. Installation is swift and fuss-free with the GROHE QuickFix system, and no additional equipment required (classic topmount installation with 7mm profile).
Product Code:	G-31552SD1
ERP Code:	G-31552SD1
Barcode:	4005176623714
Product Features:	GROHE Whisper, 25 Year Warranty, GROHE Long-Life finish
Dimensions:	(l) 880mm x (w) 525mm x (h) 220mm
Package Weight:	2.3
CAD3D:	Download

Product Images



MOT



GROHE Long-Life
finish



25 Year Warranty