

# Grohe Lineare Single-lever basin mixer 1/2S-Size



**Range:** Lineare

**Description:** The GROHE Lineare single-lever basin mixer with standard high spout – elegance and water-saving performance! - monobloc installation, metal lever, 28 mm ceramic cartridge , with GROHE SilkMove, with temperature limiter, GROHE Long-Life finish, GROHE Water Saving - Less water, perfect flow, maximum flow rate (at 3 bar): 5 l/min, SpeedClean mousseur, GROHE FastFixation Plus installation system, smooth body with push-open waste set 1 1/4", flexible connection hoses

**Product Code:** G-23106001

**ERP Code:** G-23106001

**Barcode:** 4005176409110

**Product Features:** GROHE SilkMove, 20 Year Warranty, GROHE Long-Life finish, GROHE

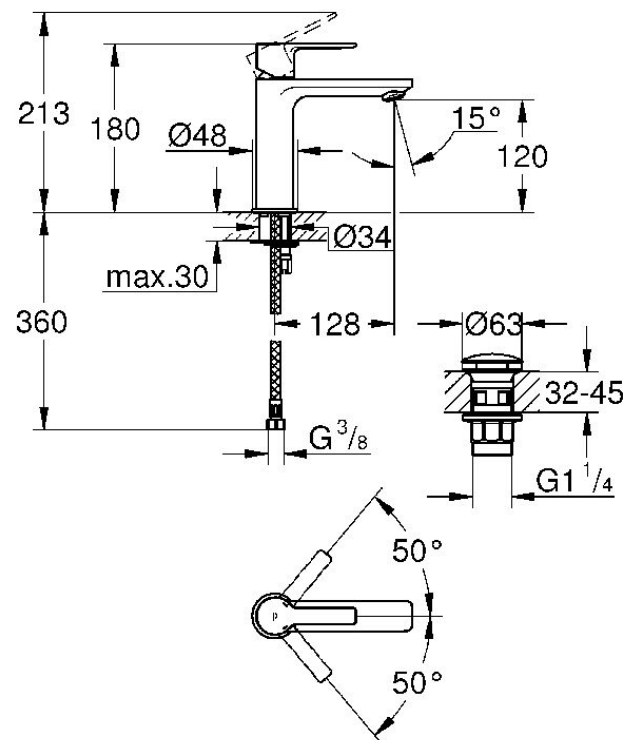
Water Saving

**Dimensions:** (l) 325mm x (w) 235mm x (h) 65mm

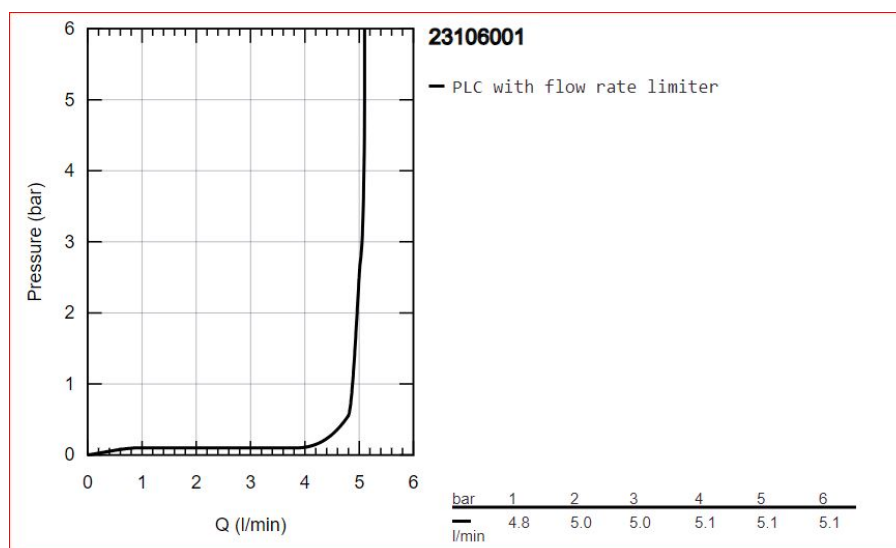
**Package Weight:** 1.65

**CAD3D:** [Download](#)

## Product Images



## Flow Chart



## MOT



20 Year Warranty



GROHE SilkMove



GROHE Long-Life  
finish



GROHE Water Saving