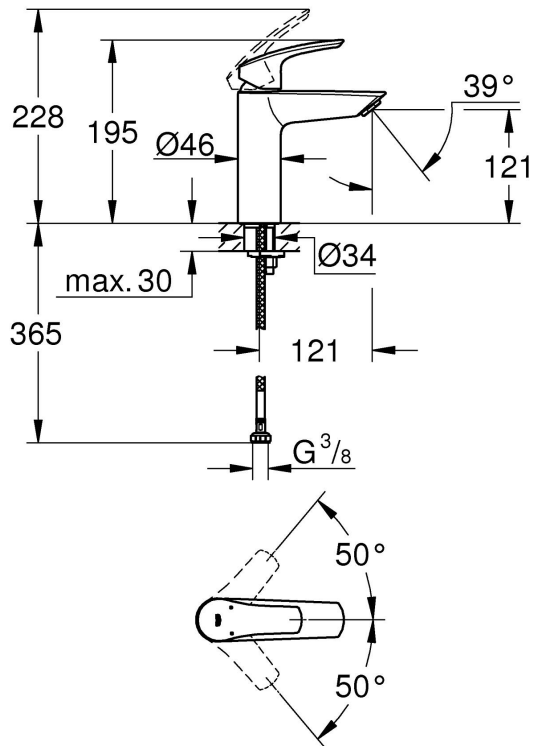


Grohe Eurosmart Basin Mixer 1/2"M-Size

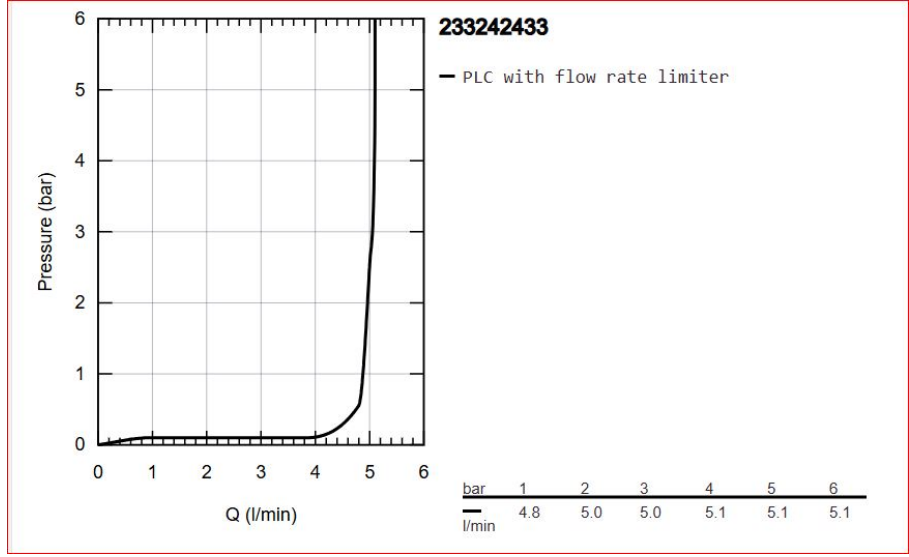
Range:	Eurosmart
Description:	AVAILABLE JUNE 25 Modernise your bathroom with minimal effort with the new matt black Eurosmart. Refined and refreshed in form, function and finish for the demands of modern bathrooms, the single-lever M-size basin mixer is pure joy to operate and to look at, becoming a focal point that boasts its sleek design. Inside the GROHE SilkMove ceramic cartridge offers durable, precise volume and temperature control via the solid metal lever and features a smooth body, perfect for basins that do not require a retractable chain, a pop-up or push-open waste. The integrated temperature limiter saves energy, while GROHE Water Saving technology reduces water consumption to max. 5 l/min (at 3 bar) without compromising on performance. Isolated inner waterways ensure that water is lead- and nickel-free within the tap. Isolated inner waterways ensure that water is lead- and nickel-free within the tap. Designed for single hole installation and equipped with the FastFixation system and flexible connection hoses the tap can be fitted in no time. And the GROHE Long-Life finish is hard-wearing and easy to clean, so the stunning matt black surface will last for a lifetime.
Product Code:	233242433
ERP Code:	233242433
Barcode:	4067393017158
Product Features:	GROHE SilkMove, 20 Year Warranty, GROHE Water Saving
Dimensions:	(l) 390mm x (w) 175mm x (h) 70mm
Package Weight:	1.675
CAD3D:	Download



Product Images



Flow Chart



MOT



GROHE SilkMove



GROHE Water Saving



20 Year Warranty