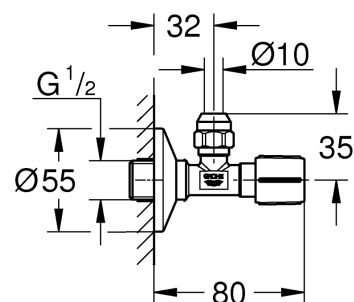
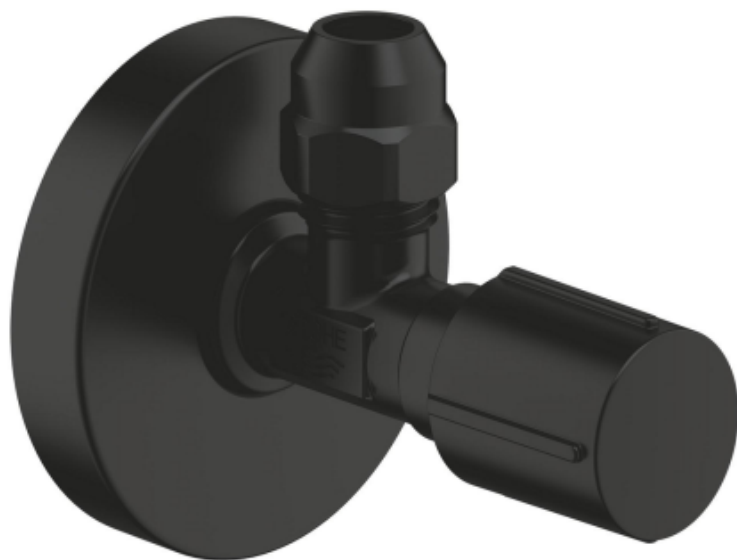


Grohe Grohe Angle Valve 1/2X3/8



Range:	Grohe
Description:	The GROHE angle valve in a stylish matt black coating – the perfect finishing touch to a state-of-the-art bathroom! - pre-roughened connection thread for easy sealing, wall connection 1/2", outlet thread 3/8", with length compensation, with compression nut Ø 10 mm, water protected spindle shutoff, brass,, with grease chamber and double o-ring sealing, long connecting shaft, ergonomic metal handle, marking: neutral, metal push-on escutcheon Ø 55 mm, GROHE Long-Life finish
Product Code:	220732430
ERP Code:	220732430
Barcode:	4005176782138
Product Features:	2 Year Warranty, GROHE Long-Life finish
Dimensions:	(l) 96mm x (w) 60mm x (h) 38mm
Package Weight:	0.375

Product Images



MOT



GROHE Long-Life
finish



2 Year Warranty