

# Grohe Cubeo Single-Lever Basin Mixer 1/2"M-Size

**Range:** Cubeo

**Description:** AVAILABLE JUNE 25 Created to offer everyday convenience and comfort, the GROHE Cubeo single-lever basin mixer in stylish matt black combines a unique soft square shape with an elegant yet tactile metal handle. Inside, the durable GROHE SilkMove ceramic cartridge ensures smooth, precise volume and temperature control, with an integrated temperature limiter to save energy. For even more sustainability, GROHE Water Saving technology limits consumption to an efficient 5l/min (at 3 bar), while still giving a powerful jet of water. Thanks to the hard-wearing and easy to clean GROHE Long-Life finish, this bathroom mixer in dazzling chrome will stay looking pristine for years to come. By the way: our Cubeo collection can perfectly combined with both round and square taps, showers, accessories and ceramics, to create a harmonious overall design.

**Product Code:** 1017552430

**ERP Code:** 1017552430

**Barcode:** 4067393013310

**Product Features:** GROHE SilkMove, 20 Year Warranty, GROHE Water Saving

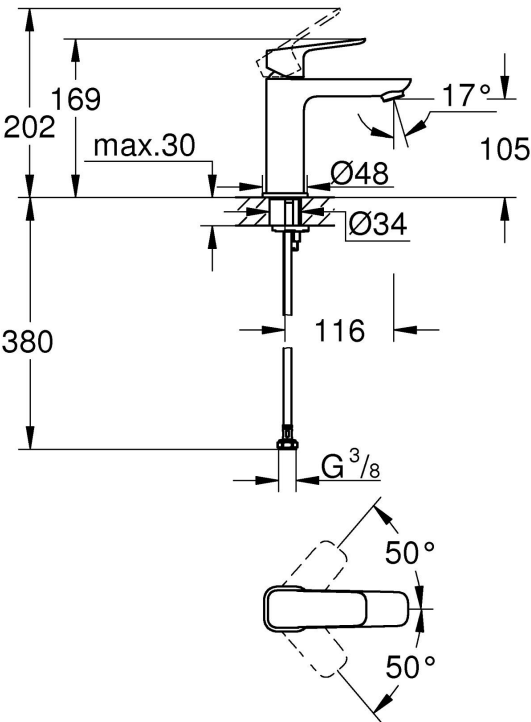
**Dimensions:** (l) 385mm x (w) 170mm x (h) 70mm

**Package Weight:** 1.43

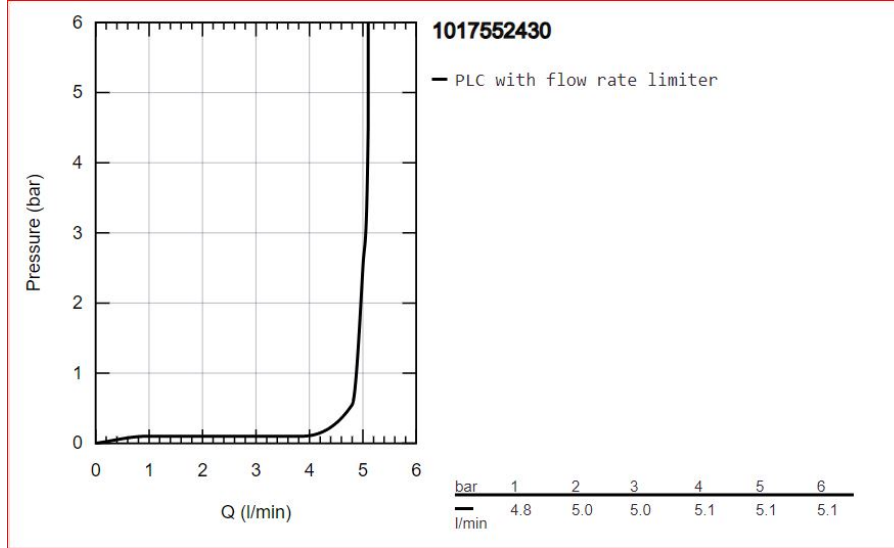
**CAD3D:** [Download](#)



Product Images



Flow Chart



MOT



GROHE SilkMove



GROHE Water Saving



20 Year Warranty