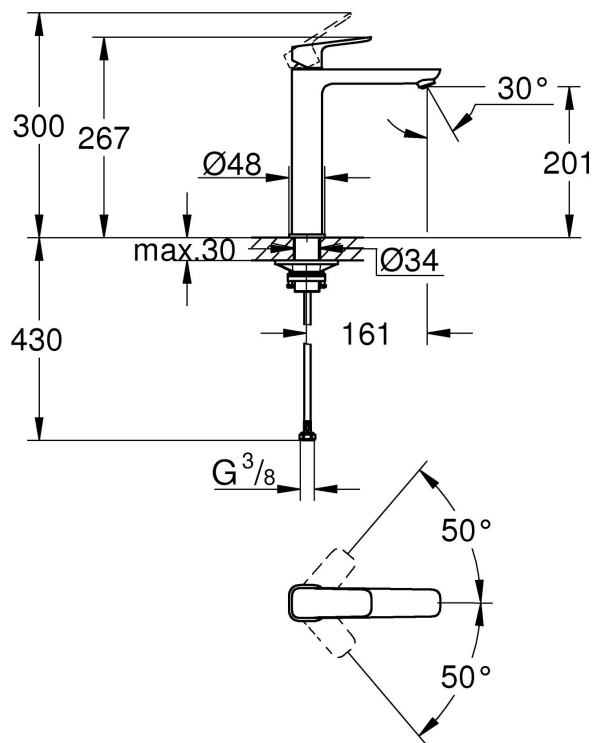


Grohe Cubeo Single-Lever Basin Mixer 1/2"XL-Size

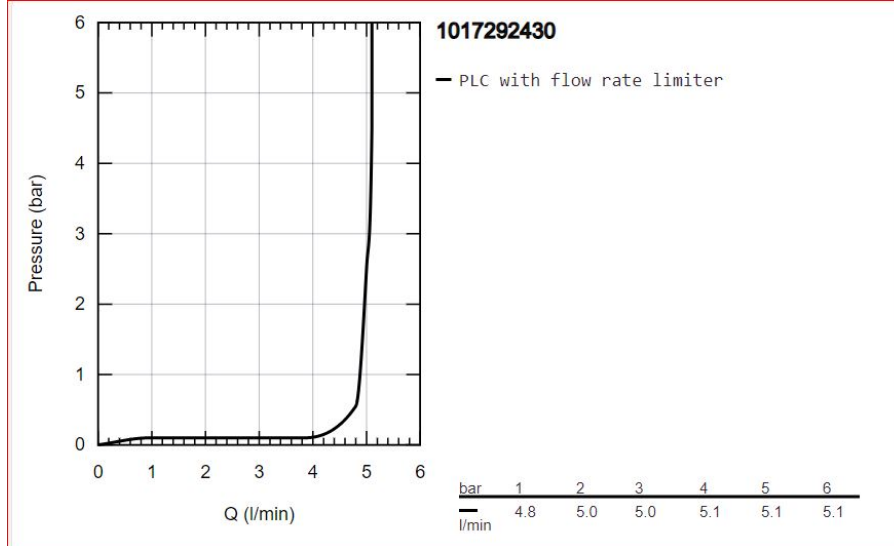
Range:	Cubeo
Description:	Bringing scale and performance to your bathroom upgrade, this GROHE Cubeo basin mixer in a stunning matt black finish is perfect teamed with vessel basins - monobloc installation, for free-standing basins, metal lever, 28 mm ceramic cartridge , with GROHE SilkMove, adjustable flow rate limiter, with temperature limiter, GROHE Water Saving - Less water, perfect flow, maximum flow rate (at 3 bar): 5 l/min, GROHE AquaGuide adjustable mousseur, GROHE FastFixation installation system, smooth body, flexible connection hoses
Product Code:	1017292430
ERP Code:	1017292430
Barcode:	4067393012238
Product Features:	GROHE SilkMove, 20 Year Warranty, GROHE Water Saving, 5 Years on coating
Dimensions:	(l) 460mm x (w) 235mm x (h) 80mm
Package Weight:	2.295
CAD3D:	Download



Product Images



Flow Chart



MOT



GROHE SilkMove



GROHE Water Saving



20 Year Warranty