

Grohe Cubeo Single-Lever Basin Mixer 1/2"XL-Size



Range: Cubeo

Description: AVAILABLE JUNE 25 Free-standing basins make a bold statement, but they need the right mixer to sustain the opulence. Meet the XL GROHE Cubeo single-lever mixer! With its characteristic cuboid design and dazzling chrome finish, it will take any bathroom design up a notch. The extra-high spout contains a GROHE AquaGuide adjustable aerator, meaning you can angle the flow perfectly to your basin shape and depth. Operation is smooth and easy via the solid metal lever handle that is elegant yet tactile and feels sure in the hand. Inside, the durable GROHE SilkMove ceramic cartridge ensures stepless, precise volume and temperature control, with an integrated temperature limiter to save energy. For even more sustainability, GROHE Water Saving technology limits consumption to an efficient 5l/min (at 3 bar), while still giving a powerful jet of water. Thanks to the hard-wearing and easy to clean GROHE Long-Life finish, this bathroom mixer with its dazzling chrome surface will stay looking pristine for a lifetime. By the way: our Cubeo collection can perfectly combined with both round and square taps, showers, accessories and ceramics, to create a harmonious overall design.

Product Code: 1017290000

ERP Code: 1017290000

Barcode: 4067393012221

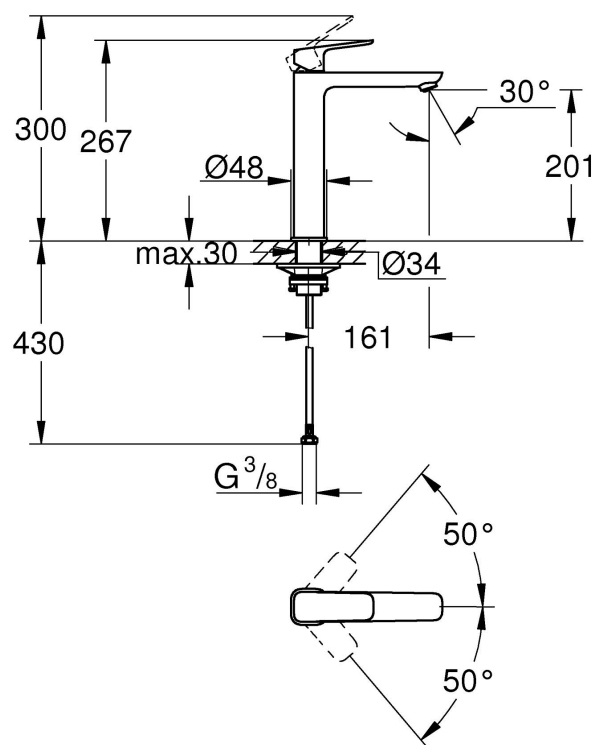
Product Features: GROHE SilkMove, 20 Year Warranty, GROHE Water Saving

Dimensions: (l) 455mm x (w) 235mm x (h) 80mm

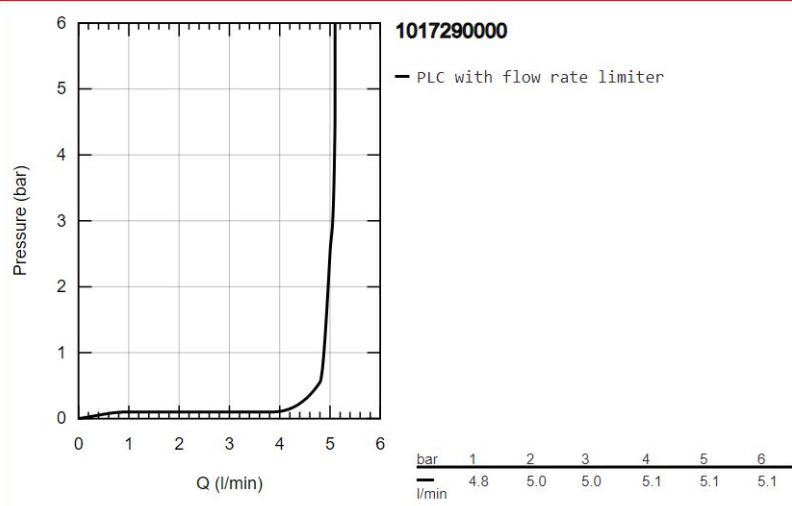
Package Weight: 2.205

CAD3D: [Download](#)

Product Images



Flow Chart



MOT



GROHE SilkMove



GROHE Water Saving



20 Year Warranty