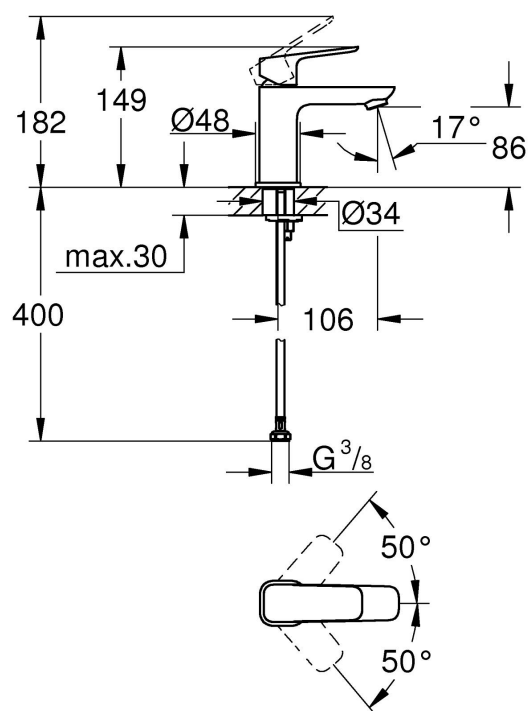


Grohe Cubeo Single-Lever Basin Mixer 1/2"S-Size

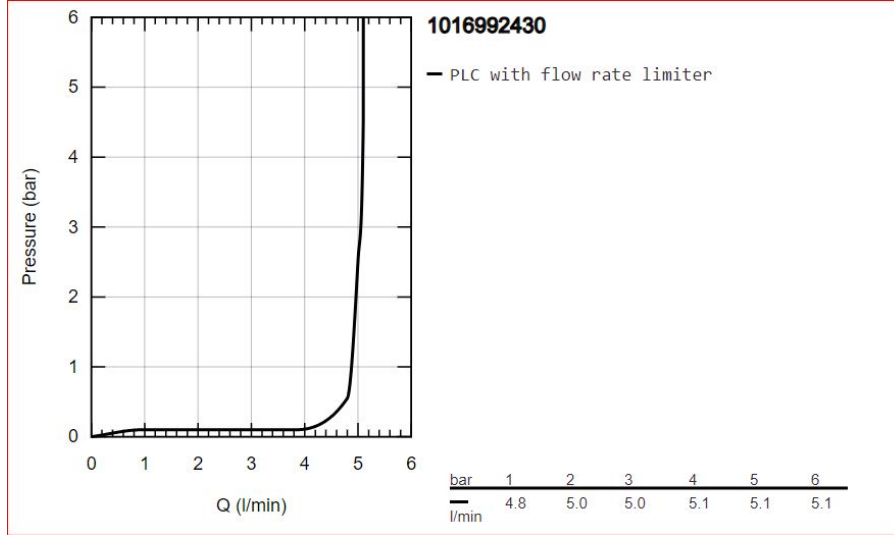


| | |
|--------------------------|--|
| Range: | Cubeo |
| Description: | AVAILABLE JUNE 25 Offering supreme comfort and convenience, the GROHE Cubeo single-lever basin mixer in striking matt black combines a stylish soft square design with an elegant yet tactile metal handle. Inside, the durable GROHE SilkMove ceramic cartridge ensures smooth, precise volume and temperature control, with an integrated temperature limiter to save energy. For even more sustainability, GROHE Water Saving technology limits consumption to an efficient 5l/min (at 3 bar), while still giving a powerful jet of water. By the way: our Cubeo collection can perfectly combined with both round and square taps, showers, accessories and ceramics, to create a harmonious overall design. |
| Product Code: | 1016992430 |
| ERP Code: | 1016992430 |
| Barcode: | 4067393014171 |
| Product Features: | GROHE SilkMove, 20 Year Warranty, GROHE Water Saving |
| Dimensions: | (l) 385mm x (w) 170mm x (h) 70mm |
| Package Weight: | 1.31 |
| CAD3D: | Download |

Product Images



Flow Chart



MOT



GROHE SilkMove



GROHE Water Saving



20 Year Warranty