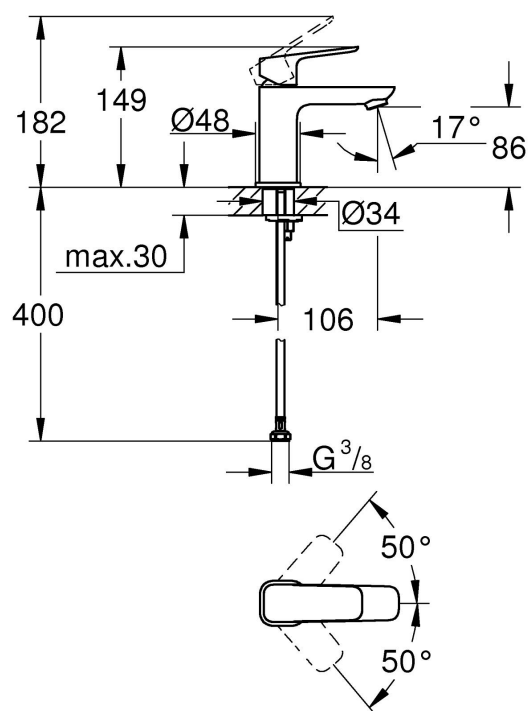


Grohe Cubeo Single-Lever Basin Mixer 1/2"S-Size

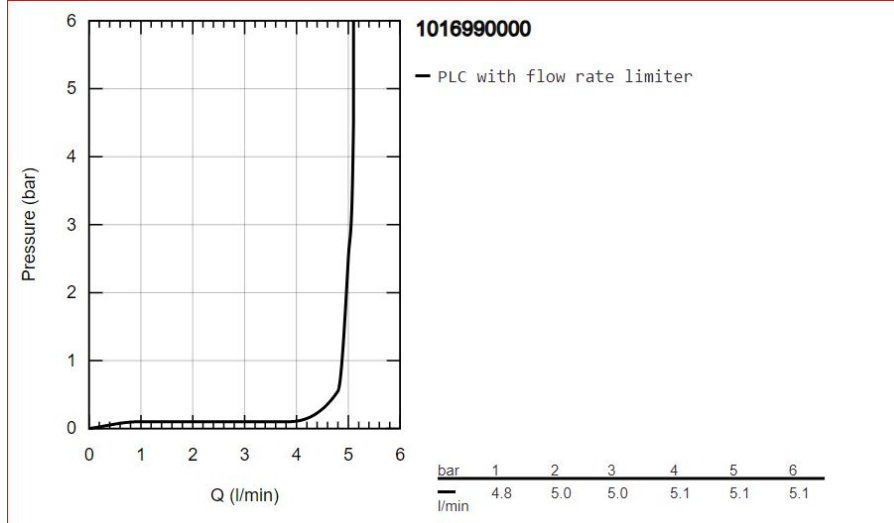


Range:	Cubeo
Description:	Offering supreme comfort and convenience, the GROHE Cubeo single-lever basin mixer combines a stylish soft square design with an elegant yet tactile metal handle. Inside, the durable GROHE SilkMove ceramic cartridge ensures smooth, precise volume and temperature control, with an integrated temperature limiter to save energy. For even more sustainability, GROHE Water Saving technology limits consumption to an efficient 5l/min (at 3 bar), while still giving a powerful jet of water. Thanks to the hard-wearing and easy to clean GROHE Long-Life finish, this bathroom mixer in dazzling chrome will stay looking pristine for years to come. By the way: our Cubeo collection can perfectly combined with both round and square taps, showers, accessories and ceramics, to create a harmonious overall design.
Product Code:	1016990000
ERP Code:	1016990000
Barcode:	4067393014164
Product Features:	GROHE SilkMove, 20 Year Warranty, GROHE Water Saving
Dimensions:	(l) 385mm x (w) 170mm x (h) 70mm
Package Weight:	1.3
CAD3D:	Download

Product Images



Flow Chart



MOT



GROHE SilkMove



GROHE Water Saving



20 Year Warranty