

Cobra Tigris Sink Mixer Wall Type



Range: Tigris

Description: Cobra Tigris Sink Mixer Wall Type, 1/2 FI, Stainless Steel 304 body, 35mm cartridge, Neoperl aerator core, Stainless Steel 304 outlet tube, Stainless Steel 304 S-connector+ Stainless Steel 201 wall cover, Flow rate 14.21 l/min @300kPa, Chrome. Care & Maintenance - Ensure your product does not come into contact with any lubricants during installation. Chrome plated, matte black and any colour finishes should be wiped with warm soapy water and a soft cloth or sponge. Rinse, then dry and buff with a dry soft cloth. Under no circumstances must any detergents containing hydrochloric acids or abrasives including cream cleansers be used. Do not use abrasive cleaning materials such as scourers. Should your product have an aerator at the water outlet, it should be checked and cleaned regularly.

Product Code: TG-969

ERP Code: 1370530000

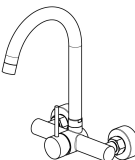
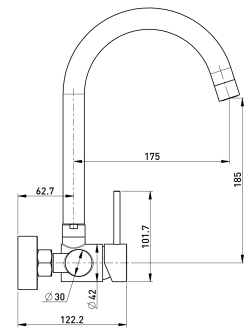
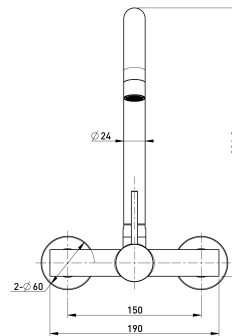
Barcode: 6002194165729

Product Features: Cobra PureShine, Cobra FeatherTouch, Cobra TeamAssist, 10 Year Warranty, New Tigris

Dimensions: (l) 280mm x (w) 210mm x (h) 110mm

Package Weight: 1.39

Product Images



MOT



Cobra FeatherTouch



Cobra PureShine



Cobra TeamAssist



10 Year Warranty