

Cobra Metsi Original Stop Tap Concealed Compression 15mm

Range: Metsi Original

Description: Cobra Metsi Original Chrome plated underwall stop tap including hot & cold indices & flange. The original rounded design. 15mm copper to copper compression connection ends. Made with de-zincification resistant brass for increased durability. With Cobra EasySwitch technology enabling your handle to be replaced by one of a different Cobra Original design. Cobra Genuine spare parts available. Cobra TeamAssist service team on call. Includes a 20 year LIXIL Africa warranty.

Product Code: MI-238-15/NV

ERP Code: FSTAC1ME-0GT02

Barcode: 6002194061663

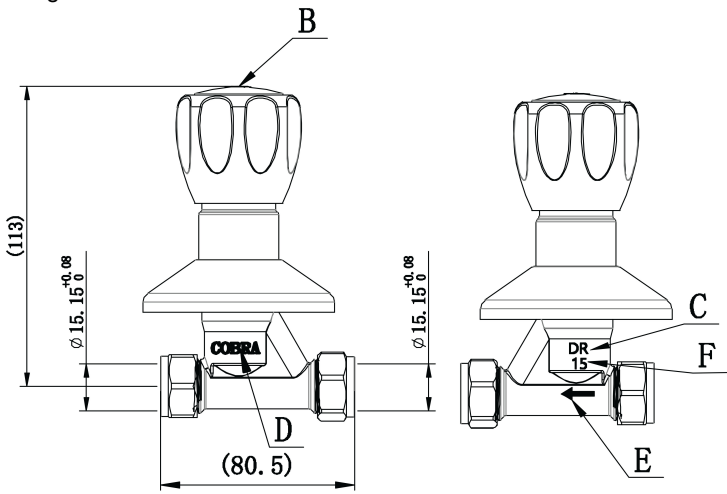
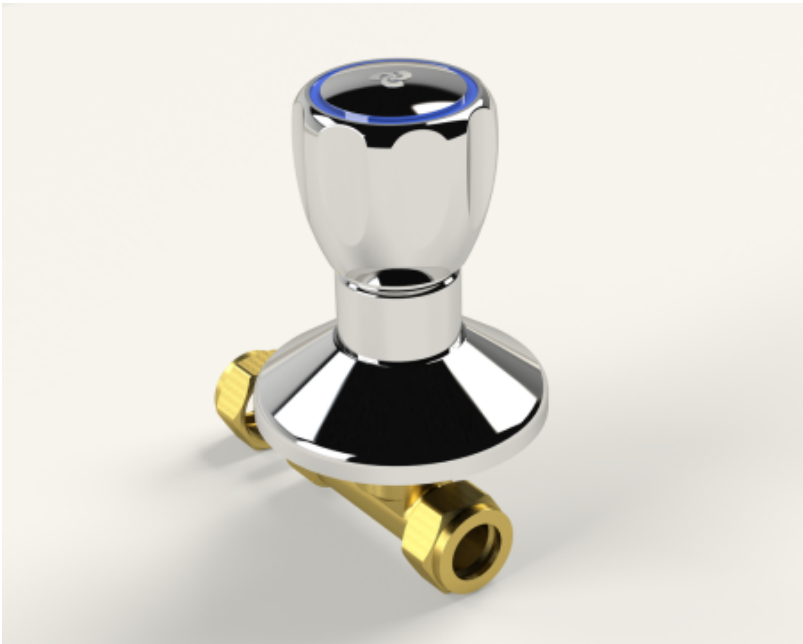
Product Features: Cobra TeamAssist, Cobra Genuine, Cobra EasySwitch, DZR Brass, 20 Year Warranty, JaswicApproved, Original

Dimensions: (l) 170mm x (w) 90mm x (h) 85mm

Package Weight: 0.48

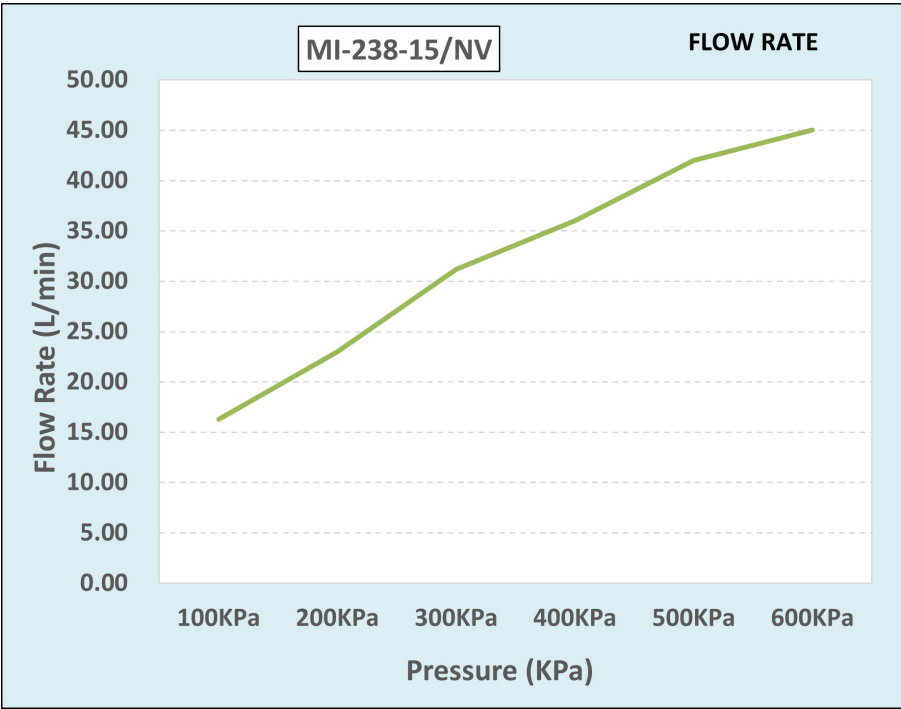


Product Images



MI-238-15/

Flow Chart





Cobra Genuine



Cobra TeamAssist



Cobra EasySwitch



20 Year Warranty



DZR Brass



JaswicApproved