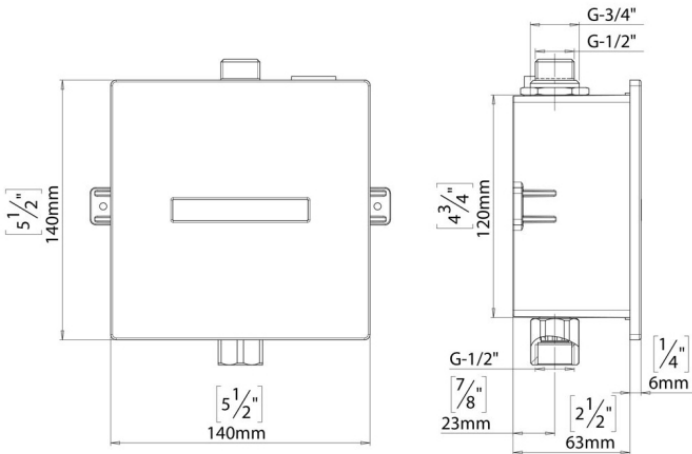
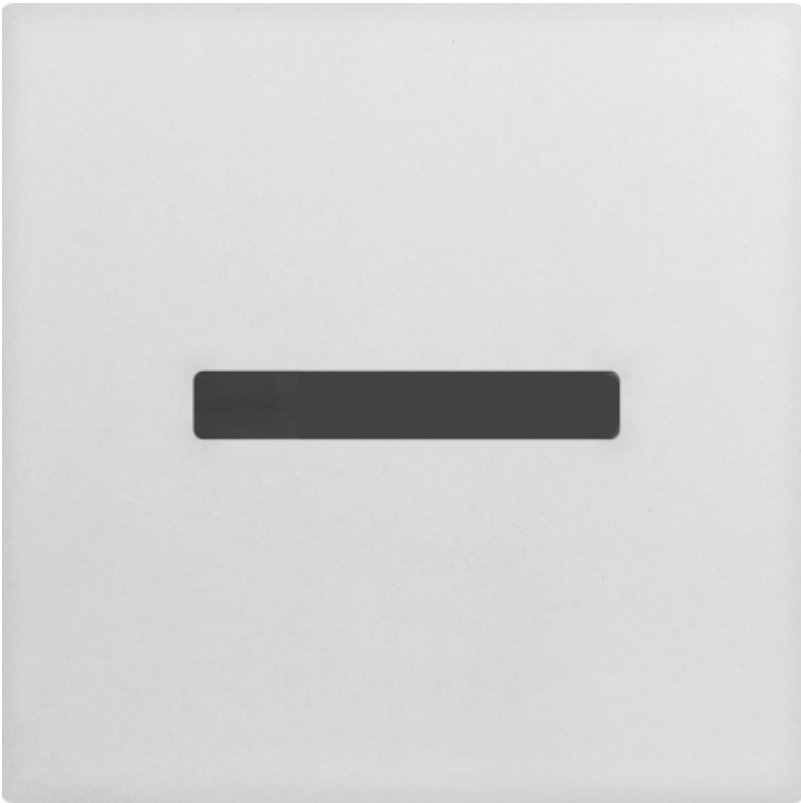


Cobra Cobratron Urinal Flush Valve Electronic

Range:	Cobratron
Description:	Cobratron sensor-activated urinal flush valve, with a stainless steel faceplate, chrome. G 3/4 or G 1/2" BSP male inlet with G 1/2 female outlet, underwall installation kit (flush valve assembly). POWER SUPPLY: Internal battery box with 9V battery (Not included) RECOMMENDED WATER PRESSURE: 0.5-8.0 bar HYGIENE FLUSH: Automatic flush 24 hours after last use SENSOR RANGE: 600mm (customizable by optional remote control) FLUSHING TIME: 6 sec (customizable by optional remote control from to sec) Care & Maintenance - Ensure your product does not come into contact with any lubricants during installation. Chrome plated, matte black and any colour finshes should be wiped with warm soapy water and a soft cloth or sponge. Rinse, then dry and buff with a dry soft cloth. Under no circumstances must any detergents containing hydrochloric acids or abrasives including cream cleansers be used. Do not use abrasive cleaning materials such as scourers. Should your product have an aerator at the water outlet, it should be checked and cleaned regularly.
Product Code:	EL-3005/N
ERP Code:	1009260000
Barcode:	6002194152613
Product Features:	2 Year Warranty
Dimensions:	(l) 340mm x (w) 207mm x (h) 38mm
Package Weight:	1.1

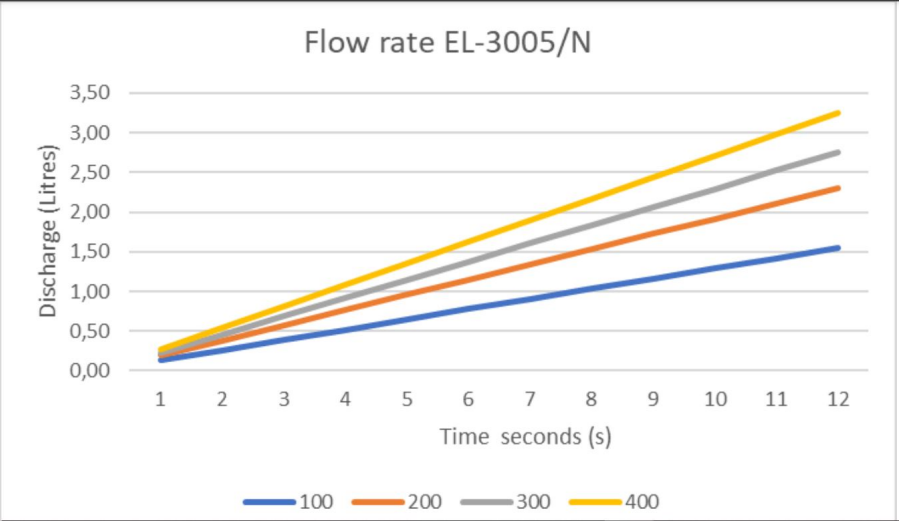


Product Images



EL-3005

Flow Chart



MOT



2 Year Warranty