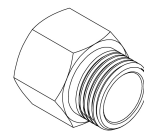
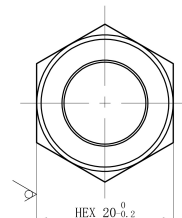
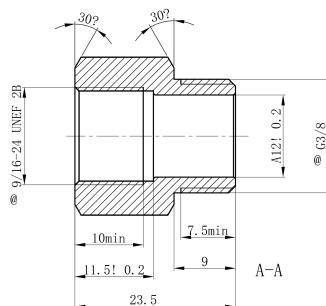
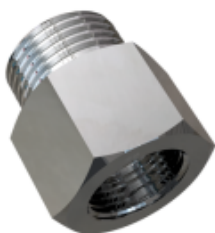


Cobra Cobra Angle Valve Adaptor



Range:	Cobra
Description:	Adaptor allowing for an angle valve with a 9/16-24 UNEF connection to connect to a Cobra single lever basin or sink mixer manufactured with G3/8 flexible connectors. For South American installations. Manufactured with Cobra DefenZR durable dezincification-resistant brass. Plated with Cobra PureShine chrome plating for long-lasting shine. Access to Cobra TeamAssist technical team. 20-year warranty.
Product Code:	C-AV/ADAP9/16F-3/8M
ERP Code:	1034090000
Barcode:	6002194156703
Product Features:	Cobra PureShine, DZR Brass, TeamAssist, 20 Years
Dimensions:	(l) 40mm x (w) 40mm x (h) 40mm
Package Weight:	0.037

Product Images



MOT



DZR Brass



Cobra PureShine