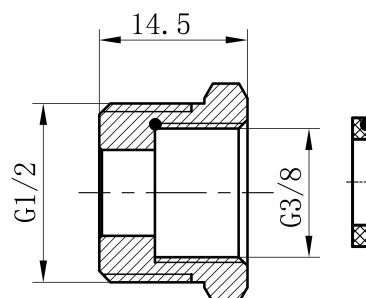
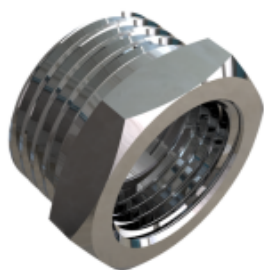


# Cobra Cobra Angle Valve Adaptor



<b>Range:</b>	Cobra
<b>Description:</b>	Adaptor allowing for an angle valve with a G3/8 connection to connect to a Cobra single lever basin or sink mixer manufactured with G1/2 flexible connectors. For African installations. Manufactured with Cobra DefenZR durable dezincification-resistant brass. Plated with Cobra PureShine chrome plating for long-lasting shine. Access to Cobra TeamAssist technical team. 20-year warranty
<b>Product Code:</b>	C-AV/ADAP3/8F-1/2M
<b>ERP Code:</b>	1034070000
<b>Barcode:</b>	6002194156680
<b>Product Features:</b>	Cobra PureShine, DZR Brass, TeamAssist, 20 Years
<b>Dimensions:</b>	(l) 40mm x (w) 40mm x (h) 40mm
<b>Package Weight:</b>	0.032

## Product Images



## MOT



DZR Brass



Cobra PureShine