

# Cobra Cobra Angle Valve Adaptor



**Range:** Cobra

**Description:** Adaptor allowing for an angle valve with a G1/2 connection to connect to a Cobra single lever basin or sink mixer manufactured with G3/8 flexible connectors. For African installations. Manufactured with Cobra DefenZR durable dezincification-resistant brass. Plated with Cobra PureShine chrome plating for long-lasting shine. Access to Cobra TeamAssist technical team. 20-year warranty.

**Product Code:** C-AV/ADAP1/2F-3/8M

**ERP Code:** 1034060000

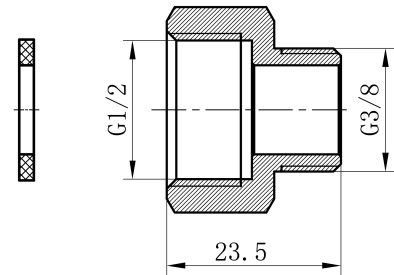
**Barcode:** 6002194156673

**Product Features:** Cobra PureShine, DZR Brass, TeamAssist, 20 Years

**Dimensions:** (l) 40mm x (w) 40mm x (h) 40mm

**Package Weight:** 0.01

## Product Images



## MOT



DZR Brass



Cobra PureShine