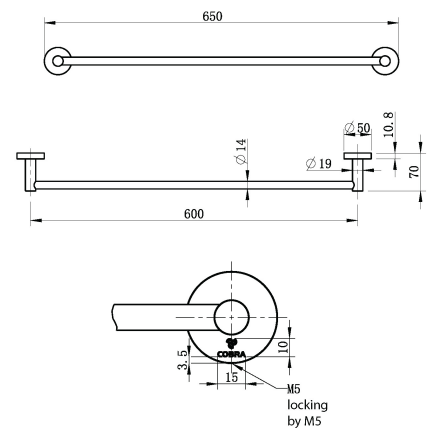


Cobra Seine Brushed Nickel Towel Rail



Range:	Seine Brushed Nickel
Description:	Single towel rail designed in a round aesthetic. 650mm in length. Fixing set included. Items are coated using a physical vapour deposition (PVD) process. Carries a 5 year warranty on functionality, 2 year warranty on brushed nickel coating.
Product Code:	AC-TR-BN
ERP Code:	101108EN00
Barcode:	6002194152880
Product Features:	Cobra TeamAssist, 5 Year Warranty, 2 years on coating, New Seine Colours
Dimensions:	(l) 605mm x (w) 55mm x (h) 80mm
Package Weight:	0.43

Product Images



MOT



Cobra TeamAssist



5 Year Warranty



2 years on coating