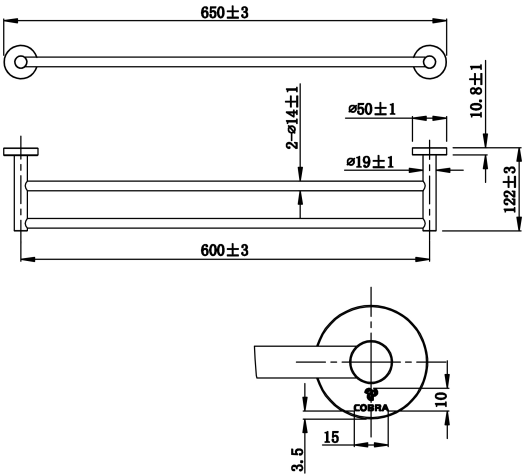


# Cobra Cobra Double Towel Rail

Range:	Cobra
Description:	Double towel rail made with stainless steel and chrome plated, 600mm. Includes: mounting screws Care & Maintenance - Ensure your product does not come into contact with any lubricants during installation. Chrome plated, matte black and any colour finishes should be wiped with warm soapy water and a soft cloth or sponge. Rinse, then dry and buff with a dry soft cloth. Under no circumstances must any detergents containing hydrochloric acids or abrasives including cream cleansers be used. Do not use abrasive cleaning materials such as scourers. Should your product have an aerator at the water outlet, it should be checked and cleaned regularly.
Product Code:	AC-DTR-CP
ERP Code:	1059550000
Barcode:	6002194158301
Product Features:	Cobra PureShine, Cobra TeamAssist, 5 Year Warranty
Dimensions:	(l) 600mm x (w) 130mm x (h) 665mm
Package Weight:	0.61



## Product Images



## MOT



Cobra TeamAssist



5 Year Warranty



Cobra PureShine