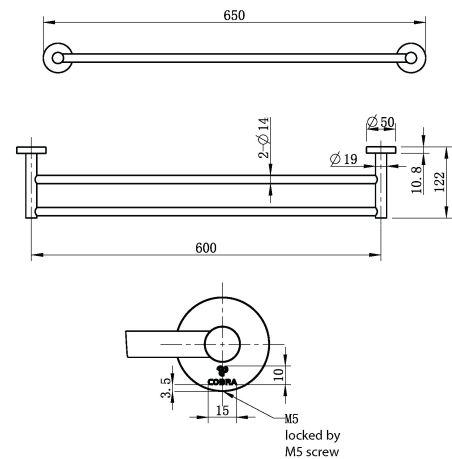


Cobra Seine Brushed Nickel Double Towel Rail



Range:	Seine Brushed Nickel
Description:	Double towel rail designed in a round aesthetic. 650mm in length. Fixing set included. Items are coated using a physical vapour deposition (PVD) process. Carries a 5 year warranty on functionality, 2 year warranty on brushed nickel coating. Care & Maintenance - Ensure your product does not come into contact with any lubricants during installation. Chrome plated, matte black and any colour finishes should be wiped with warm soapy water and a soft cloth or sponge. Rinse, then dry and buff with a dry soft cloth. Under no circumstances must any detergents containing hydrochloric acids or abrasives including cream cleansers be used. Do not use abrasive cleaning materials such as scourers. Should your product have an aerator at the water outlet, it should be checked and cleaned regularly.
Product Code:	AC-DTR-BN
ERP Code:	101121EN00
Barcode:	6002194152910
Product Features:	Cobra TeamAssist, 5 Year Warranty, 2 years on coating, New Seine Colours
Dimensions:	(l) 605mm x (w) 55mm x (h) 130mm
Package Weight:	0.56

Product Images



MOT



Cobra TeamAssist



5 Year Warranty



2 years on coating