

# Cobra Cobra Angle Valve



**Range:** Cobra

**Description:** Angle regulating valve with durable ABS handle, DZR body, flow regulating spindle type headpart G1/2 X G1/2 BSP connections. Care & Maintenance - Ensure your product does not come into contact with any lubricants during installation. Chrome plated, matte black and any colour finishes should be wiped with warm soapy water and a soft cloth or sponge. Rinse, then dry and buff with a dry soft cloth. Under no circumstances must any detergents containing hydrochloric acids or abrasives including cream cleansers be used. Do not use abrasive cleaning materials such as scourers. Should your product have an aerator at the water outlet, it should be checked and cleaned regularly.

**Product Code:** 232-10/NV

**ERP Code:** 1072920000

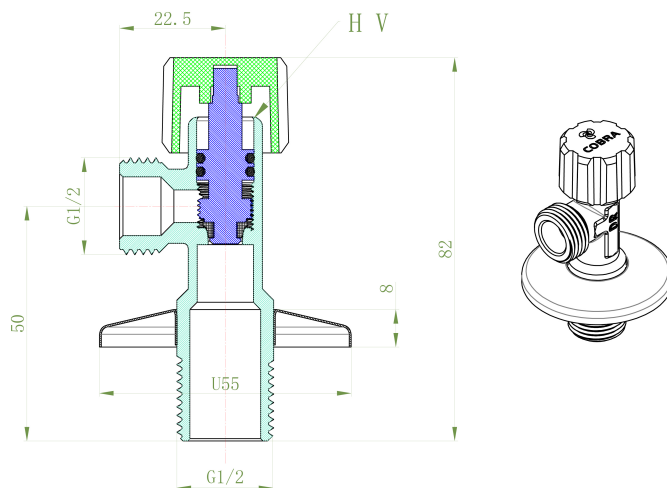
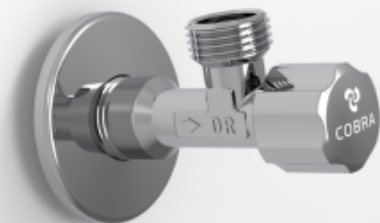
**Barcode:** 6002194158981

**Product Features:** Cobra PureShine, Cobra TeamAssist, DZR Brass, 2 Year Warranty, JaswicApproved

**Dimensions:** (l) 120mm x (w) 120mm x (h) 10mm

**Package Weight:** 0.1

## Product Images



Cobra TeamAssist



Cobra PureShine

MOT



2 Year Warranty



JaswicApproved



DZR Brass