

Cobra Cobra Check Valve Spring 40



Range: Cobra

Description: Spring-type check valve, with female connections, rough brass. DZR body, EPDM o-ring, stainless steel spring, suitable for hydraulic working pressures up to 2000 kPa (non-shock), with opening pressure of 10kPa.

Product Code: 1025-40/N

ERP Code: 10066107F0

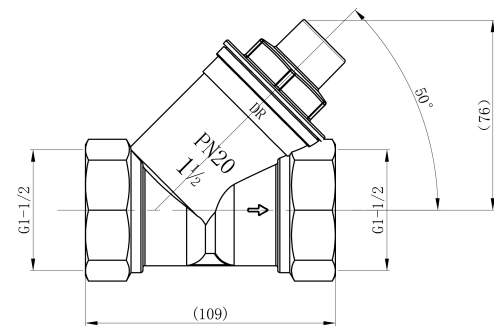
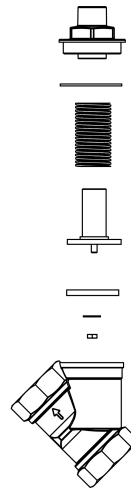
Barcode: 6002194063308

Product Features: Cobra TeamAssist, SABS Approved, DZR Brass, 2 Year Warranty

Dimensions: (l) 56.5mm x (w) 11.2mm x (h) 10.5mm

Package Weight: 1.037

Product Images



MOT



DZR Brass



2 Year Warranty



SABS Approved



Cobra TeamAssist