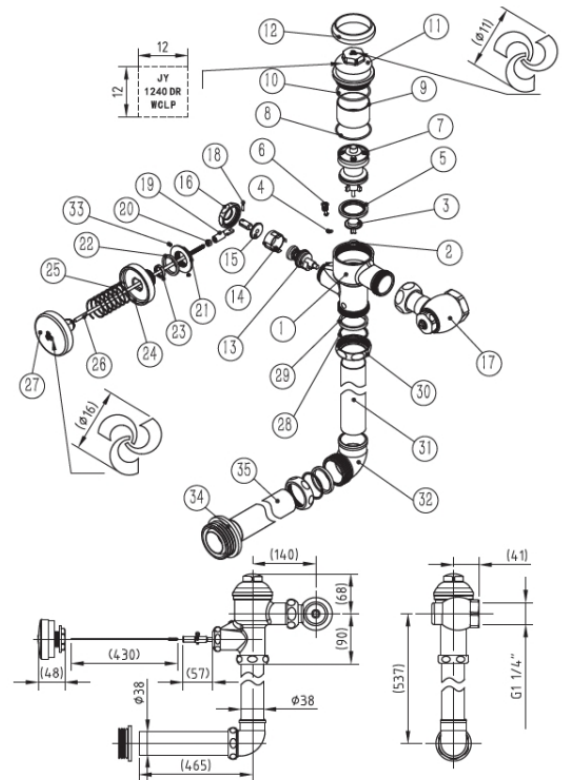


Cobra Flush Master Toilet Flush Valve



Range:	Flush Master
Description:	Concealed back entry. Non-hold open feature. With integral vacuum breaker, and control stop with integral non-return valve inlet. Adjustable control stop to valve connection 108mm to 140mm. Straight vertical flushpipe RB, Elbow flushpipe connector, straight horizontal flushpipe CP, rubber pan connector. 1 Palm press pushbutton assembly CP with pushrod and captive linkage. 1 1/4BSP female iron connection end. Recommended optimum design pressures: inlet flow pressure 30 - 300kPa for back entry WC pans: Maximum system pressure 600kPa.
Product Code:	FM3-402/N
ERP Code:	FFU5STFM-7FT01
Barcode:	6002194033097
Product	Cobra PureShine, Cobra EcoMind, Cobra TeamAssist, Cobra Genuine, Cobra
Features:	LowPressure, DZR Brass, 2 Year Warranty
Dimensions:	(l) 480mm x (w) 250mm x (h) 80mm
Package Weight:	4.46

Product Images



MOT



Cobra PureShine



Cobra EcoMind



Cobra TeamAssist



Cobra Genuine



Cobra LowPressure



2 Year Warranty



DZR Brass