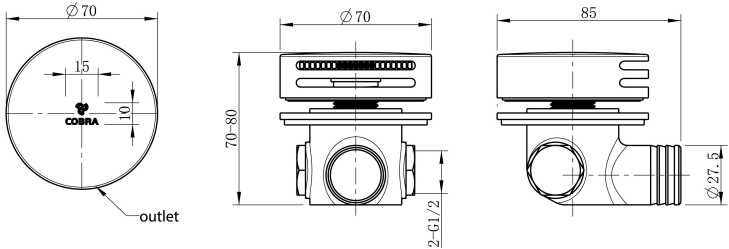
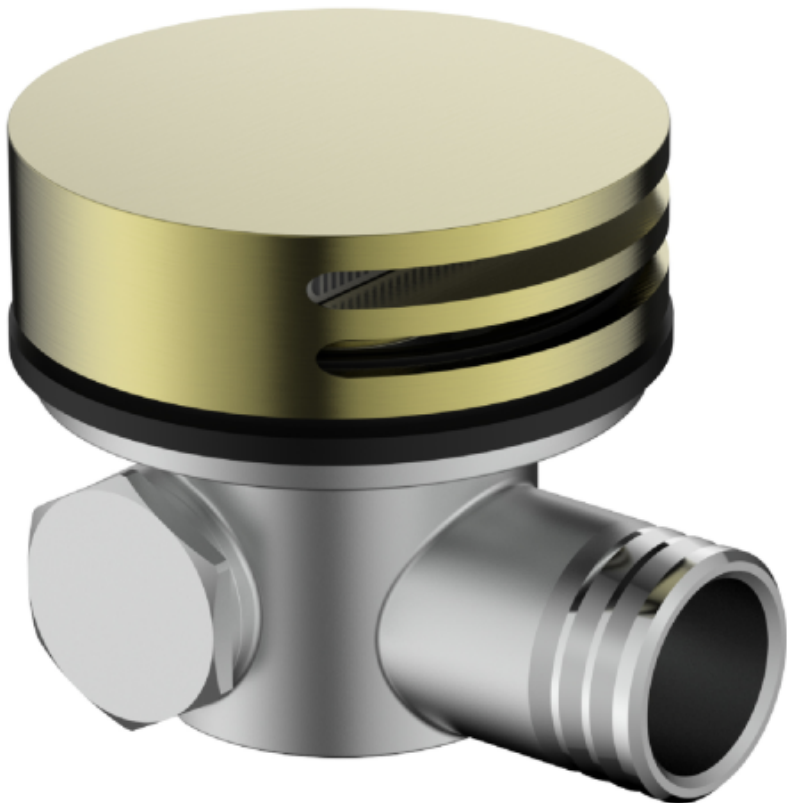


# Cobra Seine Brushed Gold Bath filler

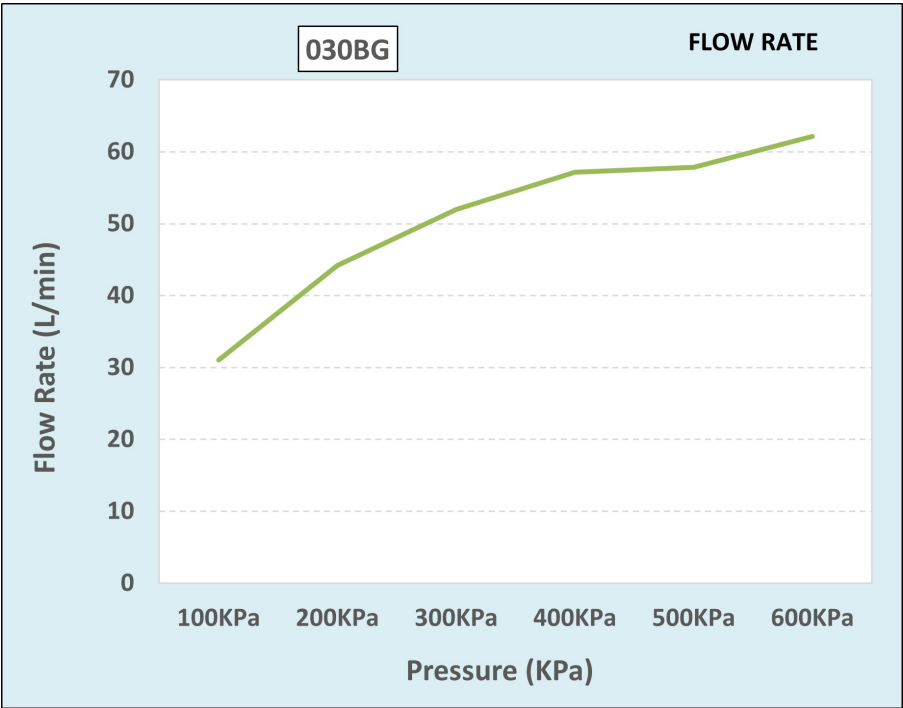
Range:	Seine Brushed Gold
Description:	Bath filler with overflow and anti-back siphonage, brushed gold. Includes: 1/2" female left/right inlets, exposed and concealed parts. For installation, left/right inlets may be used.
Product Code:	030BG
ERP Code:	103973GN00
Barcode:	6002194157182
Product Features:	Cobra TeamAssist, 20 Year Warranty, 2 years on coating
Dimensions:	(l) 100mm x (w) 80mm x (h) 80mm
Package Weight:	0.8



Product Images



Flow Chart



MOT



20 Year Warranty



Cobra TeamAssist



2 years on coating