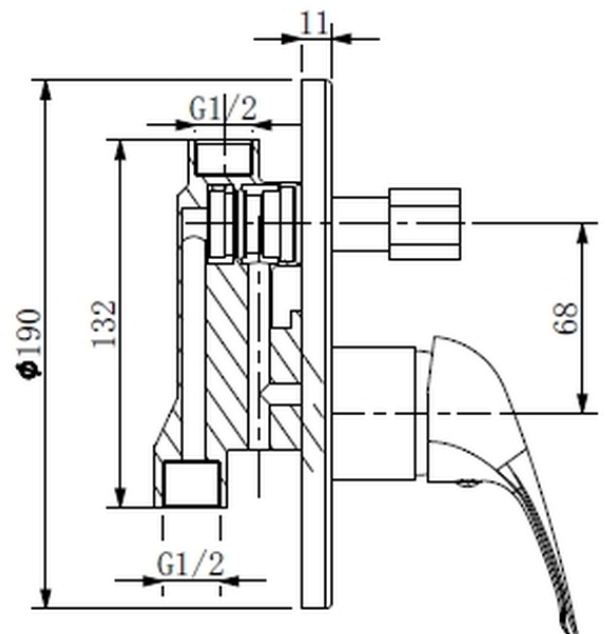


# Cobra Zambezi Diverter Mixer Concealed



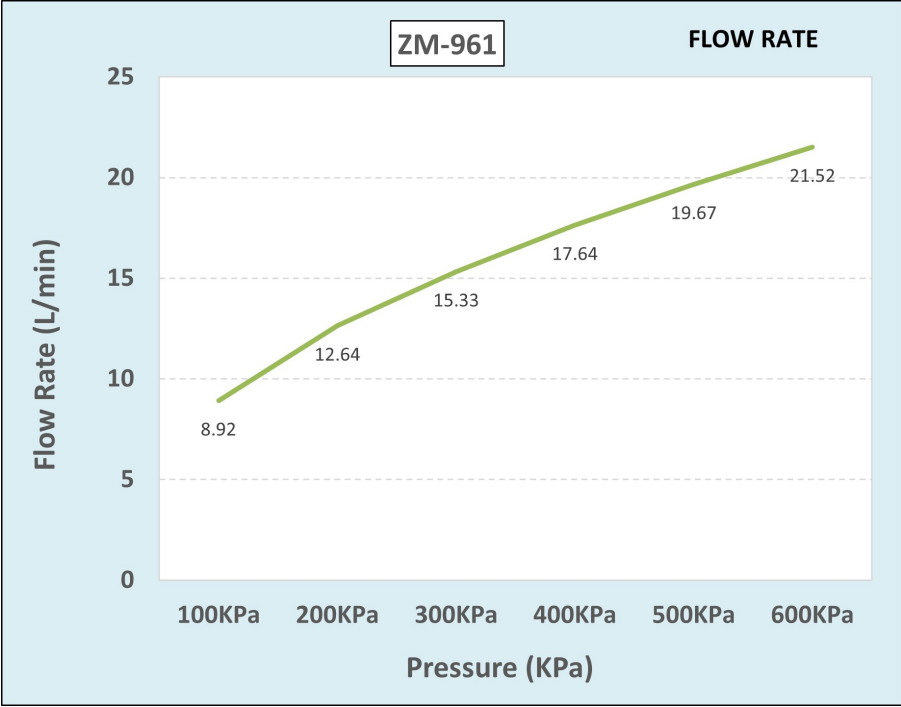
<b>Range:</b>	Zambezi
<b>Description:</b>	Zambezi concealed diverter mixer single lever with diverter 2 x G1/2 female inlet, 2 x G1/2 female outlet chrome. Care & Maintenance - Ensure your product does not come into contact with any lubricants during installation. Chrome plated, matte black and any colour finishes should be wiped with warm soapy water and a soft cloth or sponge. Rinse, then dry and buff with a dry soft cloth. Under no circumstances must any detergents containing hydrochloric acids or abrasives including cream cleansers be used. Do not use abrasive cleaning materials such as scourers. Should your product have an aerator at the water outlet, it should be checked and cleaned regularly.
<b>Product Code:</b>	ZM-961
<b>ERP Code:</b>	FBSCW2ZM-0GT0425
<b>Barcode:</b>	6002194003571
<b>Product Features:</b>	Cobra PureShine, Cobra TeamAssist, 10 Year Warranty, DZR Brass, JaswicApproved
<b>Dimensions:</b>	(l) 210mm x (w) 200mm x (h) 90mm
<b>Package Weight:</b>	1.56

Product Images



A-A  
Scale 0.300

Flow Chart



MOT



Cobra TeamAssist



10 Year Warranty



JaswicApproved



DZR Brass



Cobra PureShine