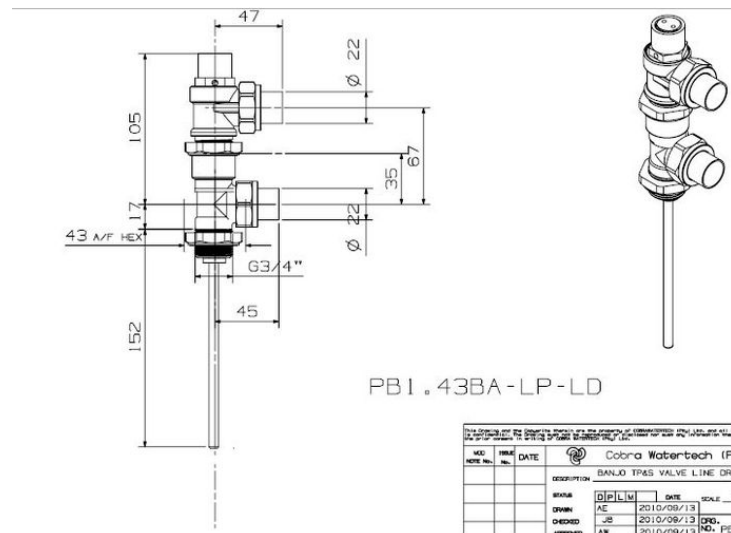


Cobra Cobra Safety Valve Solar 600 kPa & Banjo Long Probe 20mm


Range:	Cobra
Description:	TP master 'Banjo' type with extended (9) temperature probe and locking nut and silicon sealing washer. 3/4BSP male iron geyser connection plus male/female adaptor. 22mm compression relief and hot water outlets. System pressure 600kPa.
Product Code:	PB1-63BA-LP/N
ERP Code:	FTPSV360-7FT01
Barcode:	6002194024774
Product Features:	Cobra TeamAssist, DZR Brass, 2 Year Warranty
Dimensions:	(l) 290mm x (w) 80mm x (h) 50mm
Package Weight:	0.64



Product Images



PB1.43BA-LP-LD

<small>THIS DRAWING IS THE PROPERTY OF COBRAWATERTECH (PTY) LTD. IT IS TO BE USED ONLY FOR THE PROJECT AND SITE SPECIFICALLY IDENTIFIED HEREON. IT IS NOT TO BE REPRODUCED, COPIED, EITHER WHOLLY OR IN PART, OR TRANSMITTED IN ANY FORM OR BY ANY MEANS, WITHOUT THE WRITTEN PERMISSION OF COBRAWATERTECH (PTY) LTD.</small>			
NO. NOTE	REVISE NO.	DATE	 Cobra Watertech (PTY) LTD.
DESCRIPTION			BANJO TRAP VALVE LINE DRAWING 01"
STATUS	DPLM	DATE	SCALE N.T.S
DRAWN	AE	2010/09/13	BANJO
CHECKED	JS	2010/09/13	DRG.
DESIGNED	AN	2010/09/13	NO. PB1.436A-

MOT



Cobra TeamAssist



2 Year Warranty



DZR Brass