

# Cobra Cobra Safety Valve & Banjo 400kPa 20mm



**Range:** Cobra

**Description:** TP master 'Banjo' type with locking nut and silicon sealing washer. 3/4BSP male iron geyser connection plus male/female adaptor. 22mm compression relief and hot water outlets. System pressure 400kPa.

**Product Code:** PB1-43BA/N

**ERP Code:** FTPSV140-7FT01

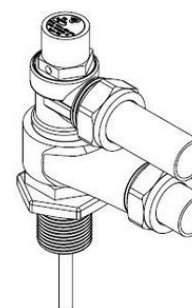
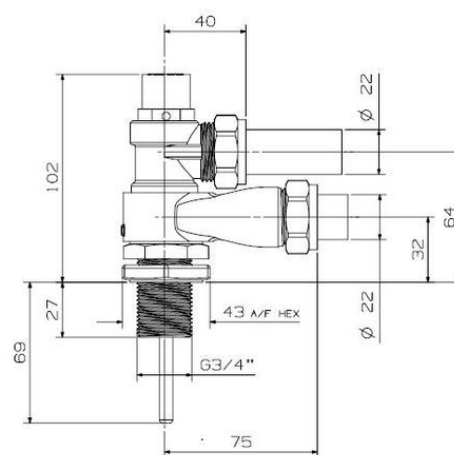
**Barcode:** 6002194024798

**Product Features:** Cobra TeamAssist, DZR Brass, 2 Year Warranty

**Dimensions:** (l) 260mm x (w) 120mm x (h) 70mm

**Package Weight:** 0.78

## Product Images



MOT



Cobra TeamAssist



2 Year Warranty



DZR Brass