

## Cobra Metsi Stop Tap Concealed Female 20mm

Metsi

With sliding wall flange. 3/4BSP female iron connection ends. CP Care & Maintenance - Ensure your product does not come into contact with any lubricants during installation. Chrome plated, matte black and any colour finishes should be wiped with warm soapy water and a soft cloth or sponge. Rinse, then dry and buff with a dry soft cloth. Under no circumstances must any detergents containing hydrochloric acids or abrasives including cream cleansers be used. Do not use abrasive cleaning materials such as scourers. Should your product have an aerator at the water outlet, it should be checked and cleaned regularly.



MI-228-20/N

FSTAF2ME-0GT01

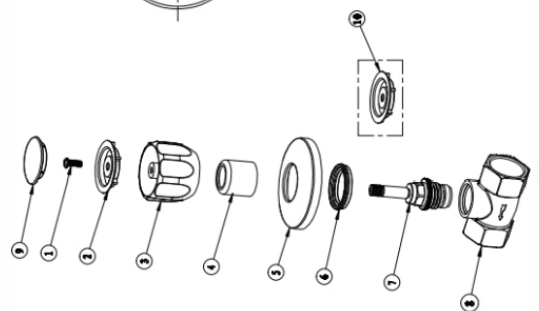
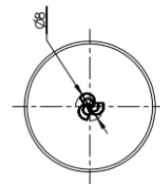
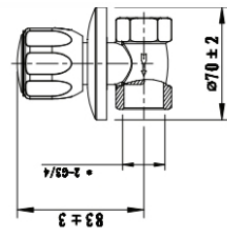
6002194032328

Cobra PureShine, Cobra TeamAssist, Cobra Genuine, Cobra EasySwitch,  
DZR Brass, 20 Year Warranty

(l) 130mm x (w) 90mm x (h) 80mm

0.45

## Product Images



## MOT



Cobra PureShine



## Cobra EasySwitch



Cobra TeamAssist



Cobra Genuine



## 20 Year Warranty



DZR Brass