

# Cobra Flush Master Toilet Flush Valve

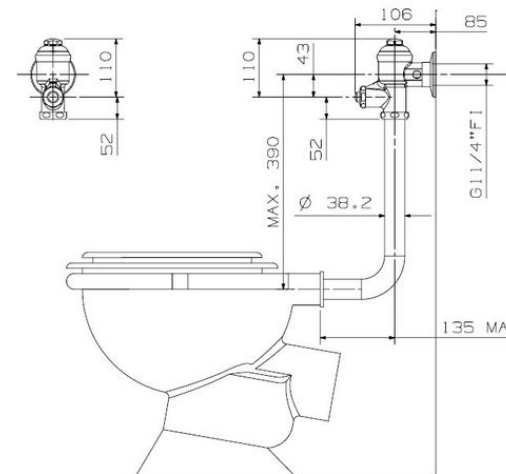


<b>Range:</b>	Flush Master
<b>Description:</b>	Exposed back entry. Non-hold open feature. Econoflush with wall flange, integral vacuum breaker, and butterfly control inlet. With bent flushpipe and rubber pan connector. 1 1/4BSP female iron connection end. Recommended optimum design pressures: inlet flow pressure 30 - 300kPa for back entry WC pans: Maximum system pressure 600kPa. Care & Maintenance - Ensure your product does not come into contact with any lubricants during installation. Chrome plated, matte black and any colour finishes should be wiped with warm soapy water and a soft cloth or sponge. Rinse, then dry and buff with a dry soft cloth. Under no circumstances must any detergents containing hydrochloric acids or abrasives including cream cleansers be used. Do not use abrasive cleaning materials such as scourers. Should your product have an aerator at the water outlet, it should be checked and cleaned regularly.
<b>Product Code:</b>	KF1-104/N
<b>ERP Code:</b>	FFU1STKF-0GT01
<b>Barcode:</b>	6002194033141
<b>Product Features:</b>	Cobra PureShine, Cobra EcoMind, Cobra TeamAssist, Cobra Genuine, Cobra LowPressure, DZR Brass, 2 Year Warranty
<b>Dimensions:</b>	(l) 410mm x (w) 220mm x (h) 90mm
<b>Package Weight:</b>	2.56

## Product Images



KF1.104



## MOT



Cobra PureShine



Cobra EcoMind



Cobra TeamAssist



Cobra Genuine



Cobra LowPressure



2 Year Warranty



DZR Brass