

# Cobra Flush Master Toilet Flush Valve



**Range:** Flush Master

**Description:** Concealed back entry. Non-hold open feature. With integral vacuum breaker, and control stop with integral non-return valve inlet. Adjustable control stop to valve connection 108mm to 140mm. Straight vertical flushpipe RB, Elbow flushpipe connector, straight horizontal flushpipe CP, rubber pan connector. Palm press pushbutton assembly CP with pushrod and captive linkage. 1 1/4BSP female iron connection end. Recommended optimum design pressures: inlet flow pressure 30 - 300kPa for back entry WC pans: Maximum system pressure 600kPa.

**Product Code:** FM3-402/N

**ERP Code:** FFU5STFM-7FT01

Barcode: 6002194033097

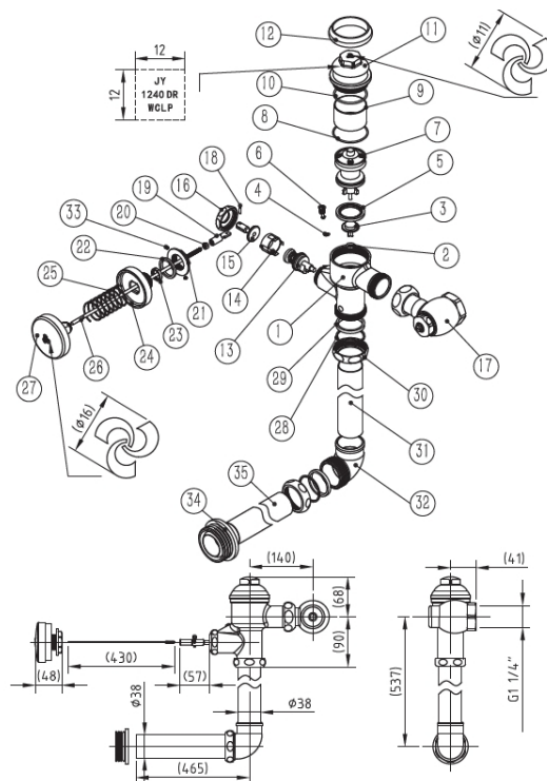
<b>Product</b>	Cobra PureShine, Cobra EcoMind, Cobra TeamAssist, Cobra Genuine, Cobra
----------------	--

**Features:** LowPressure, DZR Brass, 2 Year Warranty

**Dimensions:** (l) 480mm x (w) 250mm x (h) 80mm

**Package Weight:** 4.46

## Product Images



## MOT



Cobra PureShine



Cobra EcoMind



Cobra TeamAssist



Cobra Genuine



Cobra LowPressure



2 Year Warranty



DZR Brass