

Cobra Flush Master Toilet Flush Valve

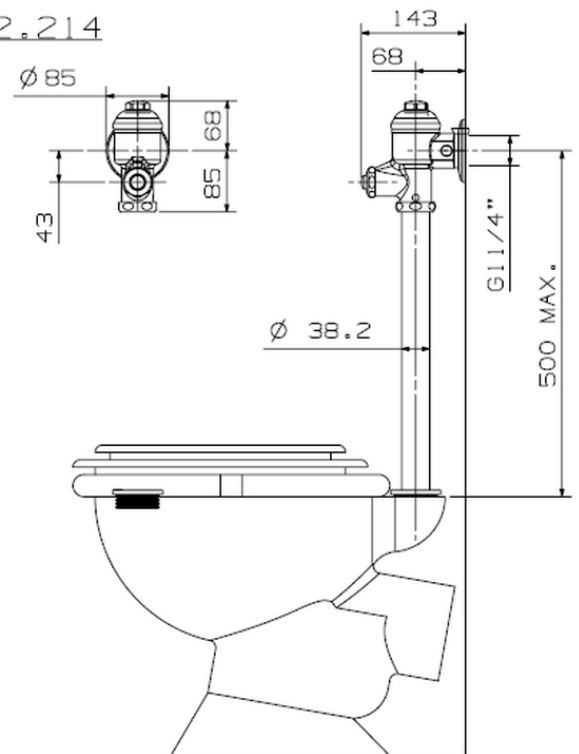


Range:	Flush Master
Description:	Exposed top entry. Non-hold open feature. With wall flange, integral vacuum breaker, and butterfly control inlet. Excludes pan connector. With straight flushpipe and rubber pan connector. 1 1/4BSP female iron connection end. Recommended optimum design pressures: inlet flow pressure 30 - 300kPa for back entry WC pans: Maximum system pressure 600kPa.
Product Code:	FM2-214/N
ERP Code:	FFU1SPFM-0GT01
Barcode:	6002194033103
Product Features:	Cobra PureShine, Cobra EcoMind, Cobra TeamAssist, Cobra Genuine, Cobra LowPressure, 2 Year Warranty
Dimensions:	(l) 410mm x (w) 220mm x (h) 80mm
Package Weight:	2.4

Product Images



FM2-214



MOT



Cobra PureShine



Cobra EcoMind



Cobra TeamAssist



Cobra Genuine



Cobra LowPressure



2 Year Warranty