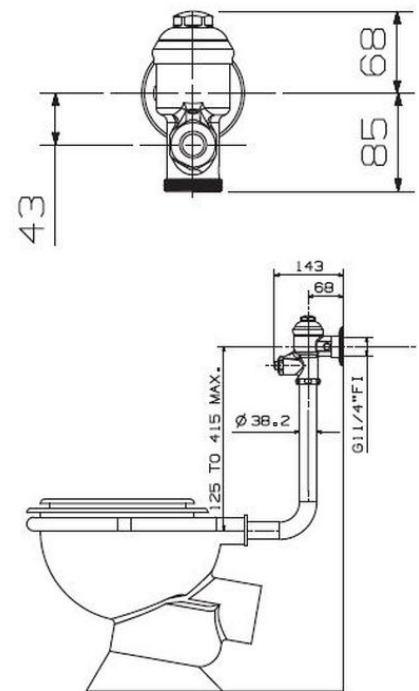


Cobra Flush Master Toilet Flush Valve



Range:	Flush Master
Description:	Exposed back entry. Non-hold open feature. With wall flange, integral vacuum breaker, and butterfly control inlet. With bent flushpipe and rubber pan connector. 1 1/4BSP female iron connection end. Recommended optimum design pressures: inlet flow pressure 30 - 300kPa for back entry WC pans: Maximum system pressure 600kPa.
Product Code:	FM2-100/N
ERP Code:	FFUUSBFM-0GT01
Barcode:	6002194021025
Product Features:	Cobra PureShine, Cobra EcoMind, Cobra TeamAssist, Cobra Genuine, Cobra LowPressure, DZR Brass, 2 Year Warranty
Dimensions:	(l) 400mm x (w) 210mm x (h) 80mm
Package Weight:	2.46

Product Images



MOT



Cobra PureShine



Cobra EcoMind



Cobra TeamAssist



Cobra Genuine



Cobra LowPressure



2 Year Warranty



DZR Brass