

Cobra Flush Master Toilet Flush Valve



Range: Flush Master

Description: Exposed back entry. Non-hold open feature. With wall flange, integral vacuum breaker, and control stop with integral non-return valve inlet. Adjustable control stop to valve connection 108mm to 140mm. With bent flushpipe and rubber pan connector. 1 1/4BSP female iron connection end. Recommended optimum design pressures: inlet flow pressure 30 - 300kPa for back entry WC pans: Maximum system pressure 600kPa. Care & Maintenance - Ensure your product does not come into contact with any lubricants during installation. Chrome plated, matte black and any colour finishes should be wiped with warm soapy water and a soft cloth or sponge. Rinse, then dry and buff with a dry soft cloth. Under no circumstances must any detergents containing hydrochloric acids or abrasives including cream cleansers be used. Do not use abrasive cleaning materials such as scourers. Should your product have an aerator at the water outlet, it should be checked and cleaned regularly.

Product Code: FM1-100/N

ERP Code: FFU1STFM-0GT01

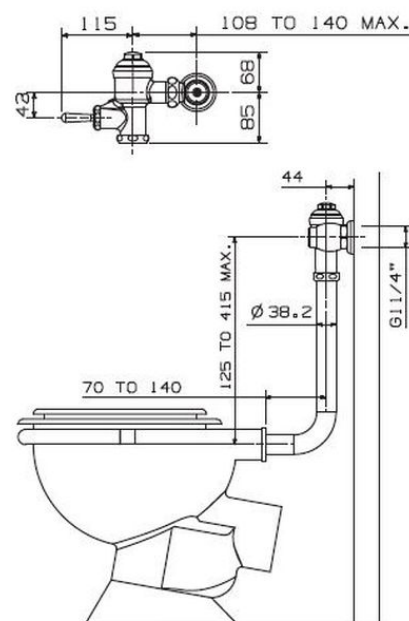
Barcode: 6002194018599

Product Features: Cobra PureShine, Cobra EcoMind, Cobra TeamAssist, Cobra Genuine, Cobra LowPressure, DZR Brass, 2 Year Warranty, JaswicApproved

Dimensions: (l) 400mm x (w) 230mm x (h) 80mm

Package Weight: 3

Product Images



MOT



Cobra PureShine



Cobra EcoMind



Cobra TeamAssist



Cobra Genuine



Cobra LowPressure



2 Year Warranty



DZR Brass



JaswicApproved