

Cobra Flush Junior Urinal Flush Valve



Range: Flush Junior

Description: Concealed. Non-hold open feature. Econoflush with 'Ball O Stop' control inlet, palm press pushbutton assembly with pushrod and captive linkage and straight urinal tail pipe. 3/4BSP female iron connection end. Recommended optimum design pressures: inlet flow pressure 30 - 500kPa: Maximum system pressure 600kPa.

Product Code: FJ8-102/N

ERP Code: FFU2SUFJ-0GT01

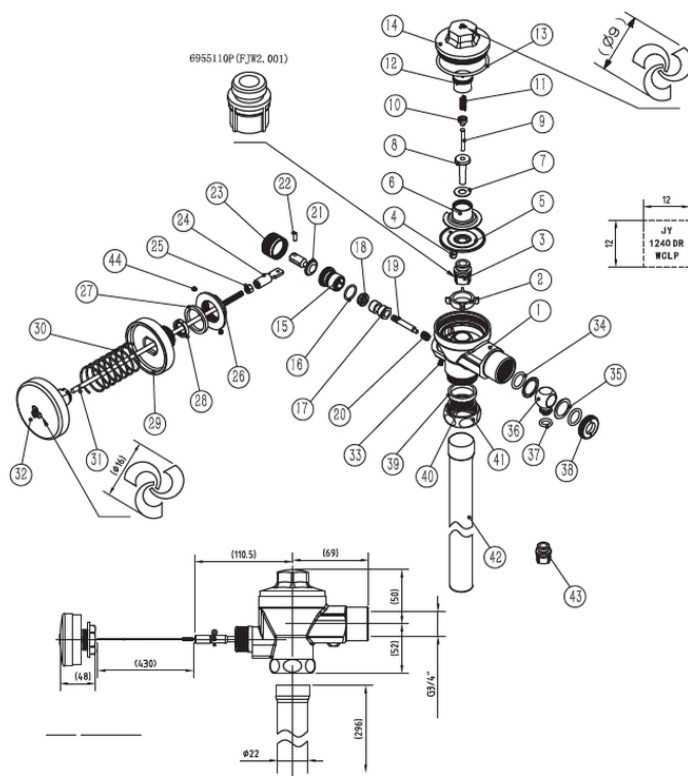
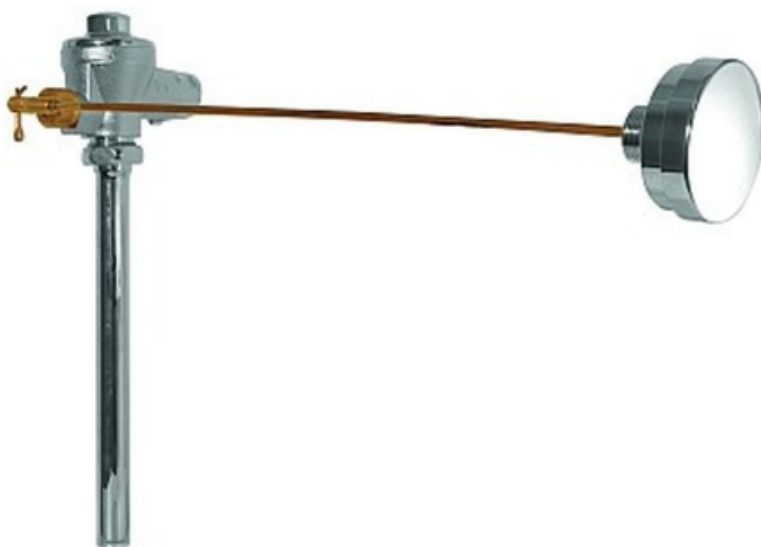
Barcode: 6002194033165

Product Features: Cobra EcoMind, Cobra TeamAssist, Cobra Genuine, Cobra LowPressure, DZR Brass, 2 Year Warranty

Dimensions: (l) 410mm x (w) 220mm x (h) 80mm

Package Weight: 1.96

Product Images



MOT



Cobra EcoMind



Cobra TeamAssist



Cobra Genuine



Cobra LowPressure



2 Year Warranty



DZR Brass