

Cobra Breathe Diverter Mixer Concealed



Range: Breathe

Description: Breathe bath/shower underwall diverter mixer, single lever, chrome. Includes: 2 x 1/2" female inlets and 2 X 1/2 female outlets. Care & Maintenance - Ensure your product does not come into contact with any lubricants during installation. Chrome plated, matte black and any colour finishes should be wiped with warm soapy water and a soft cloth or sponge. Rinse, then dry and buff with a dry soft cloth. Under no circumstances must any detergents containing hydrochloric acids or abrasives including cream cleansers be used. Do not use abrasive cleaning materials such as scourers. Should your product have an aerator at the water outlet, it should be checked and cleaned regularly.

Product Code: BR-961

ERP Code: FBSCW2Y6-0GT0383

Barcode: 6002194018223

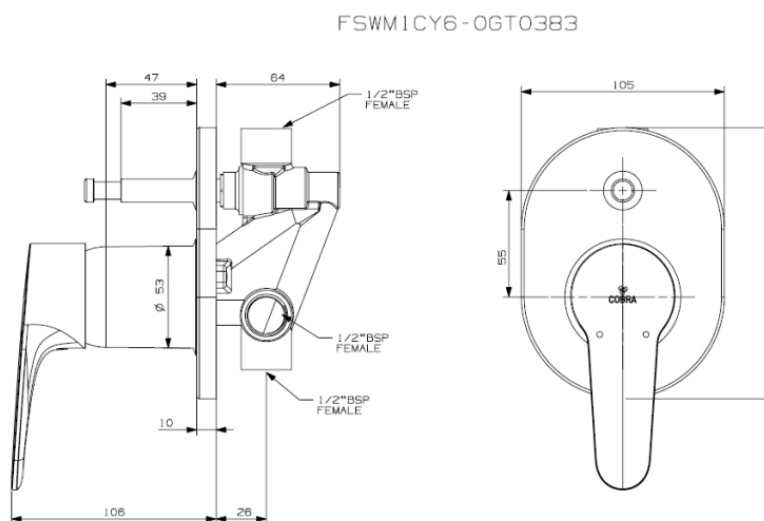
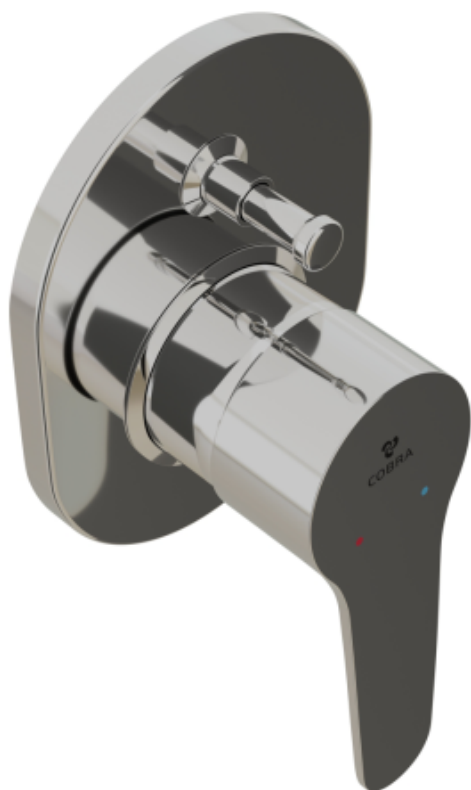
Product Features: Cobra PureShine, Cobra FeatherTouch, Cobra TeamAssist, Cobra Genuine, DZR Brass, 20 Year Warranty

Dimensions: (l) 200mm x (w) 170mm x (h) 120mm

Package Weight: 1.38

CAD3D: [Download](#)

Product Images



MOT



20 Year Warranty



Cobra PureShine



DZR Brass



Cobra FeatherTouch



Cobra TeamAssist



Cobra Genuine