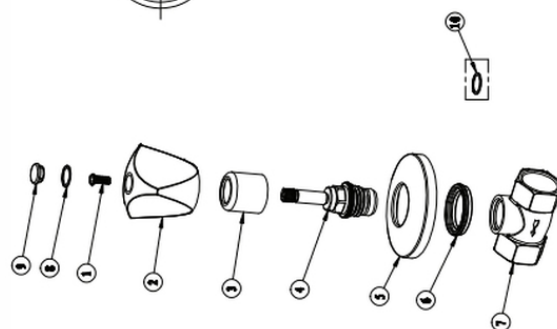
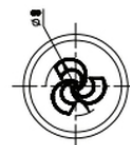
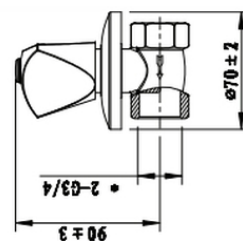


# Cobra Carina Stop Tap Concealed Female 20mm

<b>Range:</b>	Carina
<b>Description:</b>	Carina underwall stop tap 20mm FxF chrome. Care & Maintenance - Ensure your product does not come into contact with any lubricants during installation. Chrome plated, matte black and any colour finishes should be wiped with warm soapy water and a soft cloth or sponge. Rinse, then dry and buff with a dry soft cloth. Under no circumstances must any detergents containing hydrochloric acids or abrasives including cream cleansers be used. Do not use abrasive cleaning materials such as scourers. Should your product have an aerator at the water outlet, it should be checked and cleaned regularly.
<b>Product Code:</b>	628CA-20/N
<b>ERP Code:</b>	FSTAF2CK-0GT01
<b>Barcode:</b>	6002194032267
<b>Product Features:</b>	Cobra PureShine, Cobra TeamAssist, Cobra Genuine, Cobra EasySwitch, DZR Brass, 20 Year Warranty
<b>Dimensions:</b>	(l) 130mm x (w) 90mm x (h) 80mm
<b>Package Weight:</b>	0.48



## Product Images



## MOT



Cobra PureShine



Cobra EasySwitch



Cobra TeamAssist



Cobra Genuine



20 Year Warranty



DZR Brass