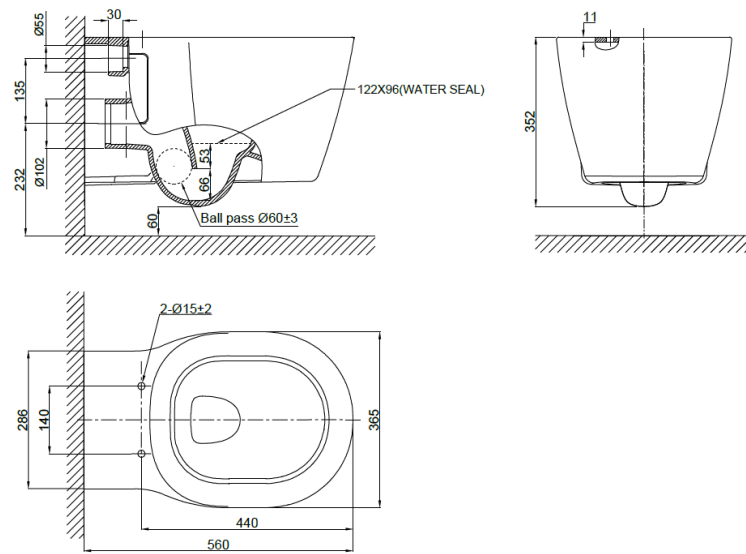


Cobra Arrive Toilet Pan Wall Hung



Range:	Arrive
Description:	Cobra Arrive wall hung toilet pan only. Dual flush capability with 3L and 6L flush available. Box rim. Installation manual and side windows included. Compatible with Cobra Arrive seat for wall hung toilet pan [CARSTWH1-6DT01]. Also compatible with concealed cisterns specifically designed for wall hung toilet pans.
Product Code:	439820WH
ERP Code:	CARPAWH1-6DT01
Barcode:	6002194041658
Product Features:	Cobra TeamAssist, Cobra Genuine, 10 Year Warranty
Dimensions:	(l) 580mm x (w) 400mm x (h) 380mm
Package Weight:	28.3

Product Images



MOT



10 Year Warranty



Cobra TeamAssist



Cobra Genuine