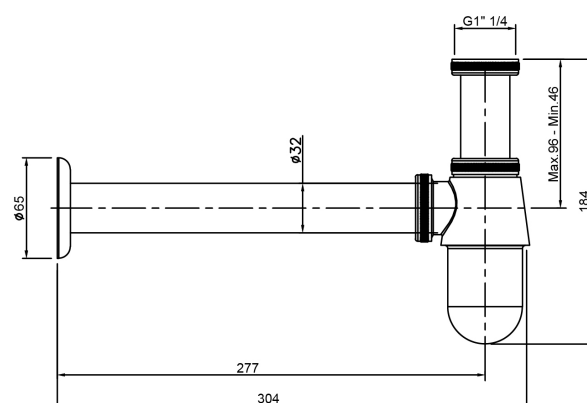


Cobra Cobra Bottle Trap Universal



Range:	Cobra
Description:	With adjustable telescopic waste connection pipe. 1 1/4BSP female inlet connection. 1 1/4BSP male iron outlet connection. Brass body. Comes with waste adaptor 1 1/4 to 1 1/2 BSP & outlet adaptors 1 1/4 & 1 1/2. Maximum flow rate +/- 37.5 l/min for trap alone, with Cobra pop-up waste, the flow rate is +/- 35.5 l/min. Care & Maintenance - Ensure your product does not come into contact with any lubricants during installation. Chrome plated, matte black and any colour finishes should be wiped with warm soapy water and a soft cloth or sponge. Rinse, then dry and buff with a dry soft cloth. Under no circumstances must any detergents containing hydrochloric acids or abrasives including cream cleansers be used. Do not use abrasive cleaning materials such as scourers. Should your product have an aerator at the water outlet, it should be checked and cleaned regularly.
Product Code:	340/N
ERP Code:	FBTRAP02-0GT01
Barcode:	6002194032816
Product Features:	Cobra PureShine, Cobra TeamAssist, 20 Year Warranty
Dimensions:	(l) 260mm x (w) 100mm x (h) 90mm
Package Weight:	0.55

Product Images



MOT



Cobra PureShine



Cobra TeamAssist



20 Year Warranty