

Cobra Stella Stop Tap Concealed Female 15mm



Range: Stella

Description: With sliding wall flange. 1/2BSP female iron connection ends. CP

Product Code: 3328ST-15/N

ERP Code: FSTAF1ST-0GT01

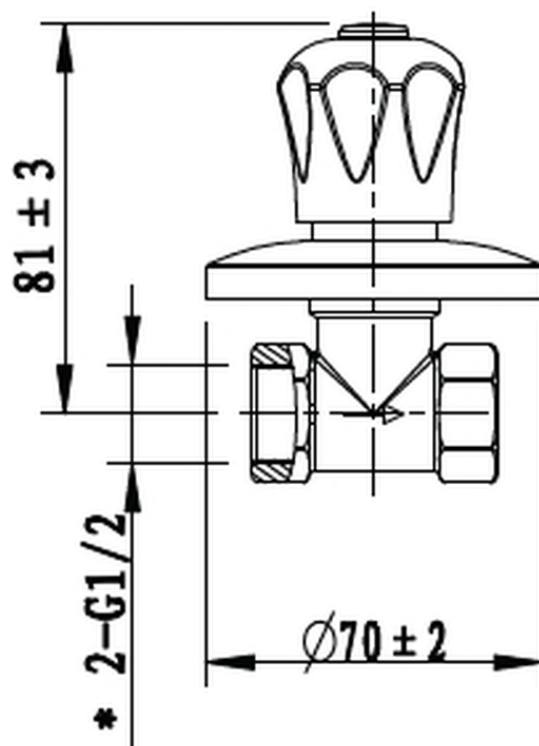
Barcode: 6002194032380

Product Features: Cobra PureShine, Cobra TeamAssist, Cobra Genuine, Cobra EasySwitch, DZR Brass, 20 Year Warranty

Dimensions: (l) 130mm x (w) 90mm x (h) 80mm

Package Weight: 0.4

Product Images



MOT



Cobra PureShine



Cobra EasySwitch



Cobra TeamAssist



Cobra Genuine



20 Year Warranty



DZR Brass