

Cobra Cobra Waste - Basin



Range: Cobra

Description: Unslotted. With flanged back nut and washer, and plug. 62mm Ø flange, 77mm long shank. 1 1/4BSP Male iron connection end. Care & Maintenance - Ensure your product does not come into contact with any lubricants during installation. Chrome plated, matte black and any colour finishes should be wiped with warm soapy water and a soft cloth or sponge. Rinse, then dry and buff with a dry soft cloth. Under no circumstances must any detergents containing hydrochloric acids or abrasives including cream cleansers be used. Do not use abrasive cleaning materials such as scourers. Should your product have an aerator at the water outlet, it should be checked and cleaned regularly.

Product Code: 308/N

ERP Code: FWARBS11-0GT01

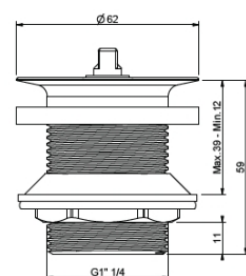
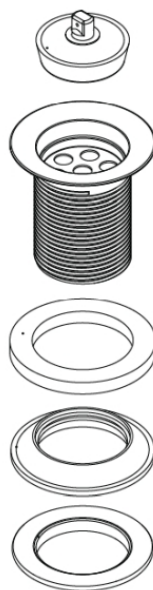
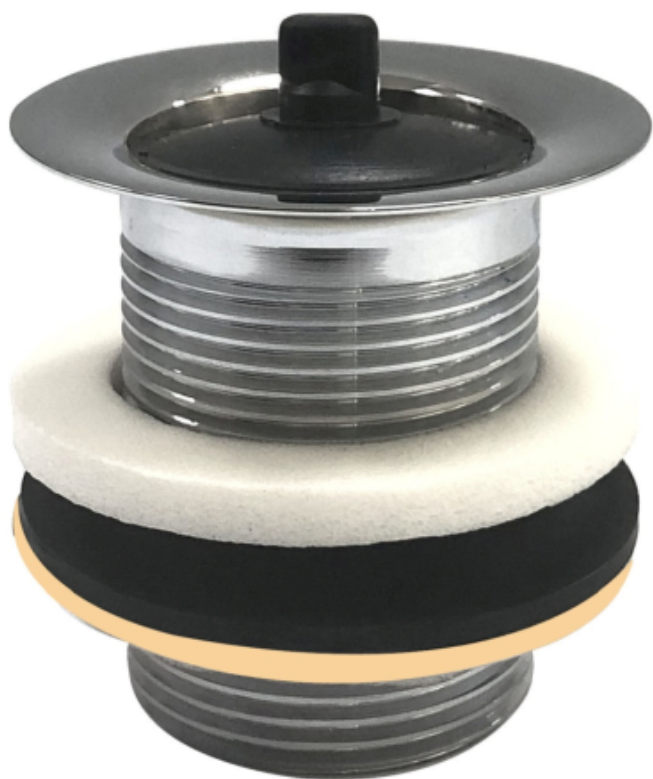
Barcode: 6002194032878

Product Features: Cobra PureShine, Cobra TeamAssist, 20 Year Warranty

Dimensions: (l) 100mm x (w) 80mm x (h) 70mm

Package Weight: 0.2

Product Images



MOT



Cobra PureShine



Cobra TeamAssist



20 Year Warranty