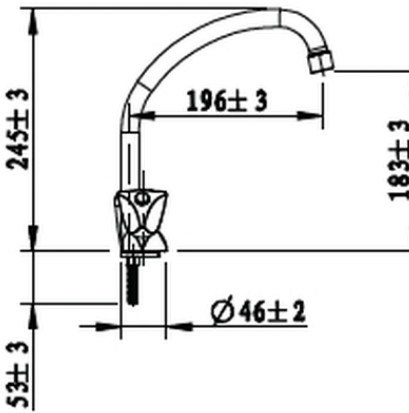
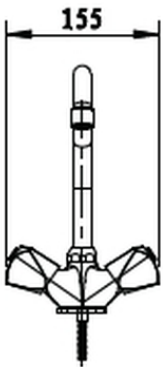


Cobra Carina Sink Mixer

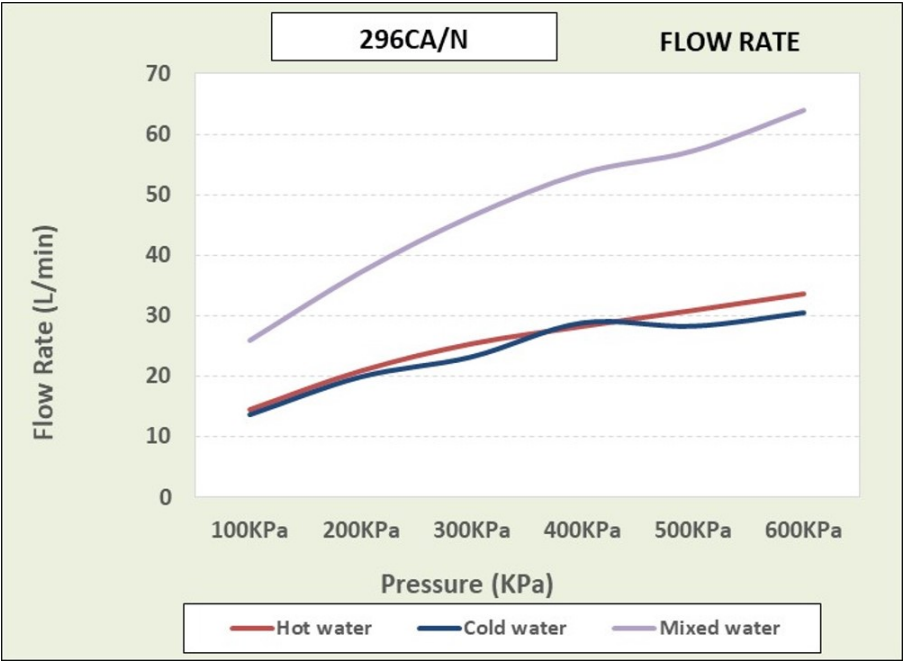
Range:	Carina
Description:	One hole with aerated swivel outlet. 1/2 BSP female connection ends. CP
Product Code:	296CA/N
ERP Code:	FSK2D1CA-0GT01
Barcode:	6002194032137
Product Features:	Cobra PureShine, Cobra TeamAssist, Cobra Genuine, Cobra EasySwitch, DZR Brass, 20 Year Warranty
Dimensions:	(l) 280mm x (w) 180mm x (h) 90mm
Package Weight:	1.2



Product Images



Flow Chart





Cobra PureShine



Cobra EasySwitch



Cobra TeamAssist



Cobra Genuine



20 Year Warranty



DZR Brass