

Cobra Cobra Bath Filler



Range:	Cobra
Description:	<p>Bath filler/overflow with n.r.v. Care & Maintenance - Ensure your product does not come into contact with any lubricants during installation. Chrome plated, matte black and any colour finishes should be wiped with warm soapy water and a soft cloth or sponge. Rinse, then dry and buff with a dry soft cloth. Under no circumstances must any detergents containing hydrochloric acids or abrasives including cream cleansers be used. Do not use abrasive cleaning materials such as scourers. Should your product have an aerator at the water outlet, it should be checked and cleaned regularly.</p>

Product Code: 1811CH/N

ERP Code: FSP001BT-0GP01

Barcode: 6002194033325

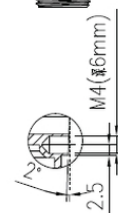
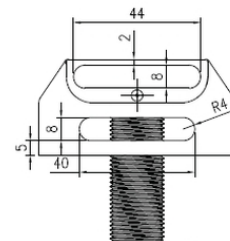
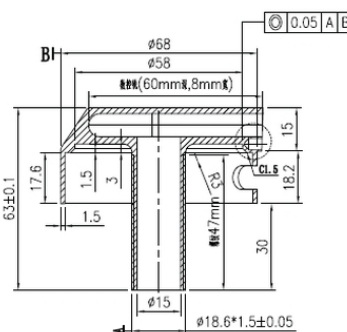
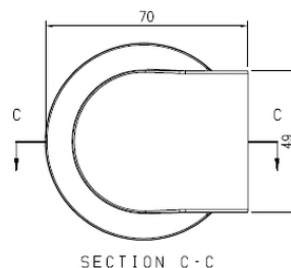
Product	Cobra PureShine, Cobra TeamAssist, 20 Year Warranty
----------------	---

Features:

Dimensions: (l) 460mm x (w) 313mm x (h) 295mm

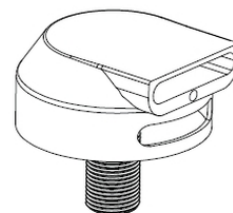
Package Weight: 0.6

Product Images



1.5:1

电镀抛光,
表面加0.3mm余量



MOT



Cobra PureShine



Cobra TeamAssist



20 Year Warranty