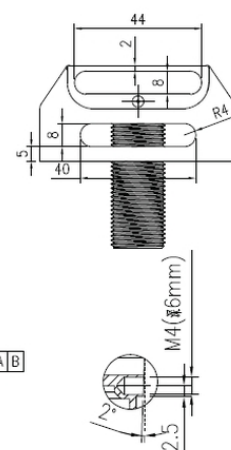
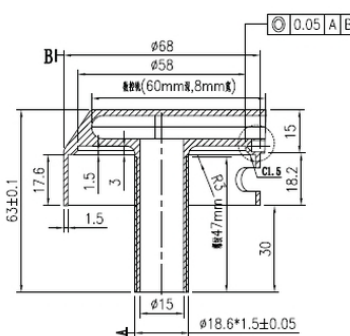
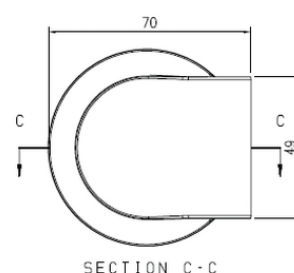


## Cobra Cobra Bath Filler

<b>Range:</b>	Cobra
<b>Description:</b>	Combination bath filler and overflow with integral anti back syphonage prevention. 2 x 1/2BSP female inlets with blanking plug for left hand or right hand entry.
<b>Product Code:</b>	030/N
<b>ERP Code:</b>	FSPT01BT-0GT01
<b>Barcode:</b>	6002194033332
<b>Product Features:</b>	Cobra PureShine, Cobra TeamAssist, 20 Year Warranty
<b>Dimensions:</b>	(l) 80mm x (w) 80mm x (h) 110mm
<b>Package Weight:</b>	0.58

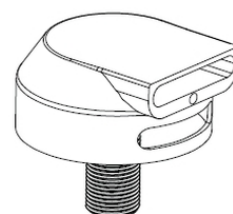


## Product Images



1.5:1

电镀抛光,  
表面加0.3mm余量



MOT



Cobra PureShine



Cobra TeamAssist



## 20 Year Warranty