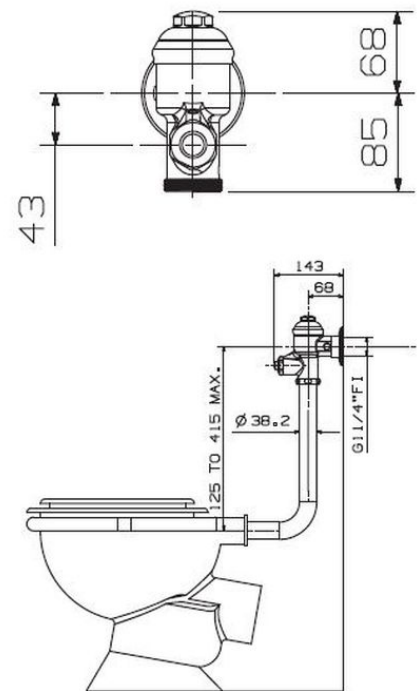


# Cobra Flush Master Toilet Flush Valve



<b>Range:</b>	Flush Master
<b>Description:</b>	Exposed back entry. Non-hold open feature. With wall flange, integral vacuum breaker, and butterfly control inlet. With bent flushpipe and rubber pan connector. 1 1/4BSP female iron connection end. Recommended optimum design pressures: inlet flow pressure 30 - 300kPa for back entry WC pans: Maximum system pressure 600kPa.
<b>Product Code:</b>	FM2-100/N
<b>ERP Code:</b>	FFUUSBFM-0GT01
<b>Barcode:</b>	6002194021025
<b>Product Features:</b>	Cobra PureShine, Cobra EcoMind, Cobra TeamAssist, Cobra Genuine, Cobra LowPressure, DZR Brass, 2 Year Warranty
<b>Dimensions:</b>	(l) 400mm x (w) 210mm x (h) 80mm
<b>Package Weight:</b>	2.46

## Product Images



## MOT



Cobra PureShine



Cobra EcoMind



Cobra TeamAssist



Cobra Genuine



Cobra LowPressure



2 Year Warranty



DZR Brass